



## WebLog Import for Prüftechnik Vibroweb XP CMS Data

WebLog Import for Prüftechnik CMS data enables the automated integration of measurement data from existing Prüftechnik Vibroweb XP Condition Monitoring Systems with a Bachmann WebLog Server, to allow a uniform approach to vibration monitoring. In this way, a uniform Remote Monitoring of this CMS is realized in existing structures and processes.

This enables condition monitoring and machine diagnostics through the various tools provided by Bachmann's WebLog Portal or WebLog Expert® software, including reporting and the use of the ticket system. Machines equipped with Prüftechnik CMS can therefore be monitored using the same functionalities and processes as those equipped with Bachmann CMS.

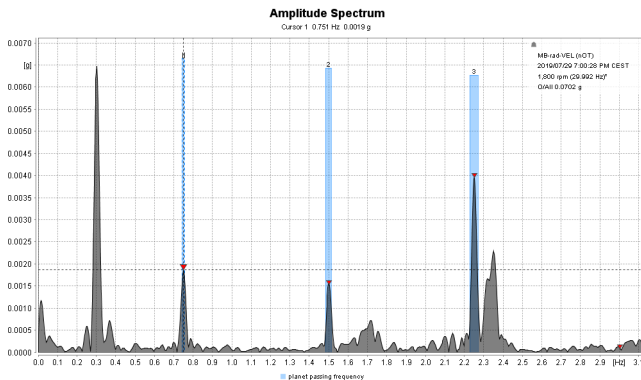
Measurement data transferred from the CMS is processed by Bachmann's WebLog Interface <sup>1)</sup>, which converts the source data into Bachmann format and calculates spectral data and characteristic values.

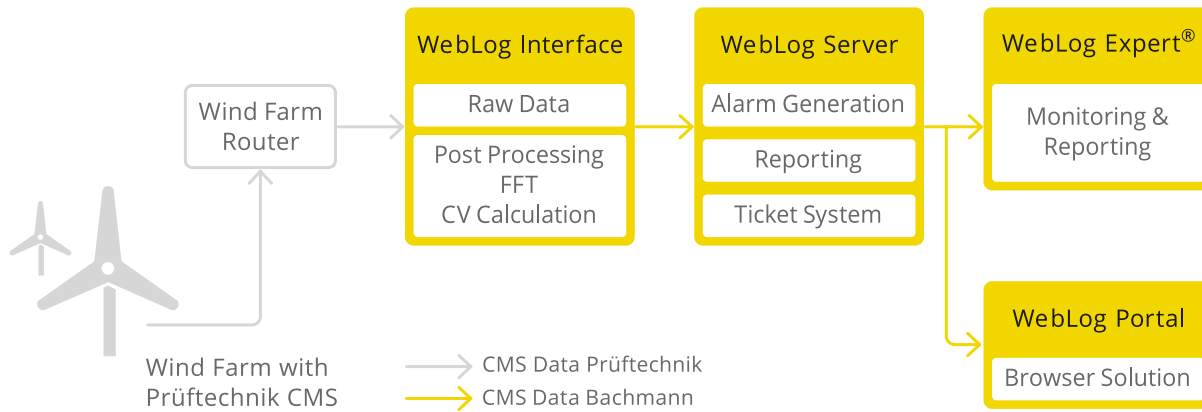
Analog to measurement data from a Bachmann CMS, the data converted via WebLog Interface are available on the WebLog Server for further evaluation and analysis using WebLog Portal or WebLog Expert®.

If changes to the system's measurement configuration are required, Bachmann experts will be happy to provide support.

<sup>1)</sup> Detailed information on the WebLog Interface can be found in the corresponding product data sheet.

Part type designation	Part number
Configuring WebLog Interface in Customer Network	00036125-00
Configuring WebLog Interface in Bachmann Network	00036126-00
WebLog Import Prüftechnik Vibroweb XP CMS Data	00036097-00





The data collected by the Prüftechnik Vibroweb XP systems is sent via a router <sup>1)</sup> in the wind farm to the WebLog Interface

which transfers the source data to a WebLog Server and offers the possibility to perform the following processing steps:

<sup>1)</sup> If the communication routes and the server infrastructure are changed, customer-specific changes to the router configuration may become necessary.

Data in SKF format	Transferred and processed data in WebLog
Time signal	Time signal Spectrum Envelope time signal Envelope curve spectrum Order-tracked time signal Order spectrum Order-tracked envelope time signal Envelope order spectrum
Trends, diagnostic analysis values	CV Trends

For the VibroWeb XP systems, a special version of Bachmann's CMSSTD software replaces the firmware on the analyzer. Once upgraded, the WebLog Interface then permits not only the data analysis in WebLog, but also enables system configuration using the tools within WebLog Expert®.

Depending on the system version, the upgrade must be done on each individual turbine through the replacement of an SD Card or the processor module.