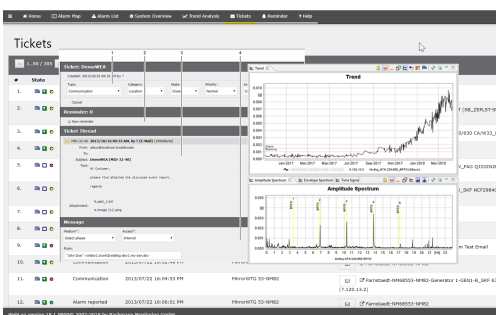
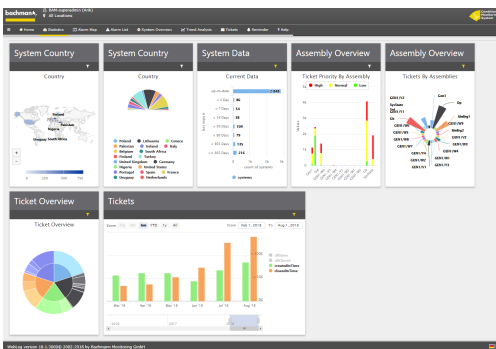
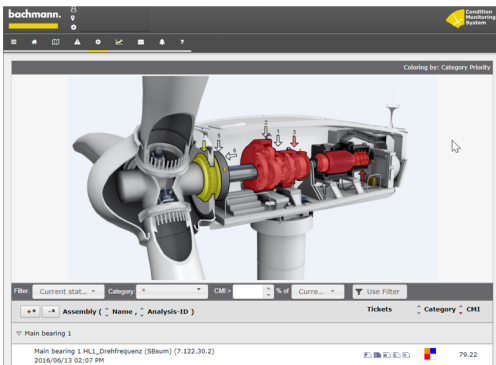




Part type designation	Part number
Full Service	00034994-00
WebLog Expert® license	00024942-63



Remote Monitoring Service

As an established leader in the field of wind turbine condition monitoring, Bachmann provides the entire chain of hardware, software and service to support condition monitoring. Our portfolio is being continuously further developed and updated. We offer modular system solutions, which are individually configured for any turbine or machine type.

Our Remote Monitoring service is based on our extensive experience of monitoring and utilises economies of scale to provide highly efficient condition monitoring processes, which are DNV Certified, and are supported by accredited quality systems.

With Bachmann Monitoring acting as your condition monitoring team, we take care of all the routine aspects of condition monitoring as well as delivering high quality diagnostic messages. We host the data and fully commission the systems, including after parts exchanges. We screen all the data for anomalies, and provide reports relating to any detected defects via our ticket system. As a customer, you have complete access to your data via the WebLog Portal, which is also your access to the ticket system. The service includes support for investigation of vibration problems, and for IT troubleshooting regarding connection to our systems.

Optionally you can upgrade to WebLog Expert®, a client based system, which provides the same functionality as used by our team.

bachmann. Max Mastmann
Remote Monitoring
Business Monitoring Center
Riedlstrasse 17
A-6800 Feldkirch, Austria
Tel.: +43 (0) 20 20 200 - 100
Fax: +43 (0) 20 20 200 - 101

RM Event Report

System Name : XYZ-1-GWS-XXXX0001
Fault Location : Gearbox
Characteristic Value : HSB-GS_ABC #H30241_BMF1 (7.120.1742.2)
Report Dates : 2016/06/02

Findings

Increasing trend of the inner race roll over frequency of the high speed shaft bearing ABC #H30241 with harmonics and suborder frequencies at an interval of the high speed shaft roll frequency.

Recommendation

- check the condition (temperature/hotbox behavior) of the high speed shaft bearing
- check the oil for increased particle concentration
- assessment/endorsement of the high speed shaft bearing, especially the inner race

Priority

Risk of progression: We recommend that the plant is operated only after an inspection has been carried out by qualified personnel. Feedback regarding the result of the inspection should be sent to the monitoring centre.

System Name: Bacti-000300-178-01 Report Period: 2016/05/04 - 2016/05/04

2. System Overview

General status: Hardware 0

Main bearing 1

Findings [13113] Increasing trend of the harmonics of the main bearing inner race roll over frequency.

Recommendation

- check the condition of the main bearing, especially the inner race.
- analyse the lubricant of the main bearing.

Gear box

Findings [13214] Increasing trend of the inner race roll over frequency of the intermediate shaft bearing ABC-GS-10220 with harmonics and suborder frequencies at an interval of the intermediate shaft bearing.

Recommendation

- Check the condition of the intermediate shaft bearing
- check the oil for increased particle concentration
- assessment/endorsement of the intermediate shaft bearing, especially the inner race

Generator 1

Findings: No findings

Recommendation: No recommendations