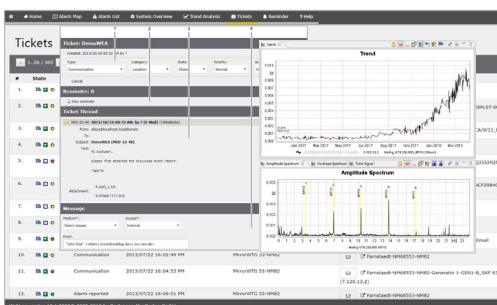
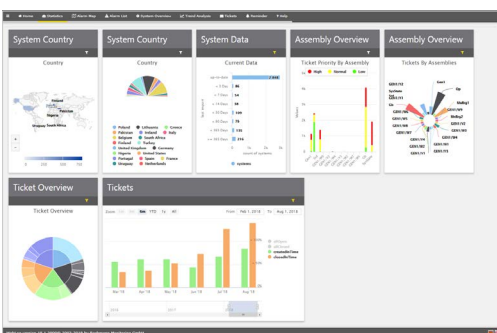
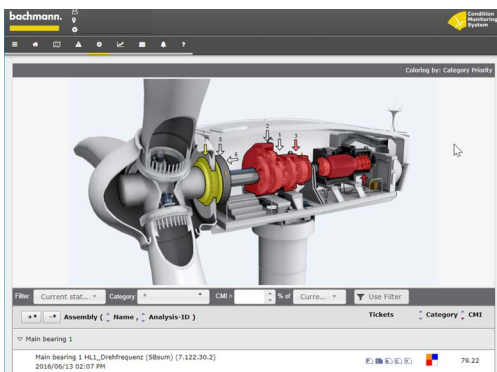




Item	Item-No.
Full Service	00034994-00
WebLog Expert® License	00024942-63



## Remote Monitoring Service

As an established leader in the field of wind turbine condition monitoring, Bachmann provides the entire chain of hardware, software and service to support condition monitoring. Our Condition Monitoring portfolio is continuously developed and updated. We offer modular system solutions, individually configured for any turbine or machine type.

Our Remote Monitoring service is based on our extensive experience of monitoring and utilises economies of scale to provide highly efficient condition monitoring processes, which are DNV Certified, and are supported by accredited quality systems.

With Bachmann Monitoring acting as your condition monitoring team, we take care of all the routine aspects of condition monitoring as well as delivering high quality diagnostic messages. We host the data and fully commission the systems, including after parts exchanges. We screen all the data for anomalies, and provide reports relating to any detected defects via our ticket system.

As a customer, you have complete access to your data via the WebLog Portal, which is also your access to the ticket system. Optionally you can upgrade to WebLog Expert®, a client based system, which provides the same functionality as used by our team. The service includes support for detailed investigation of vibration problems, and for IT troubleshooting regarding connection to our systems.

