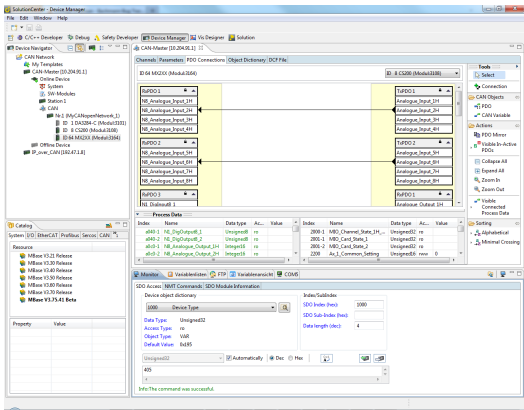




CANopen



CANopen Configurator

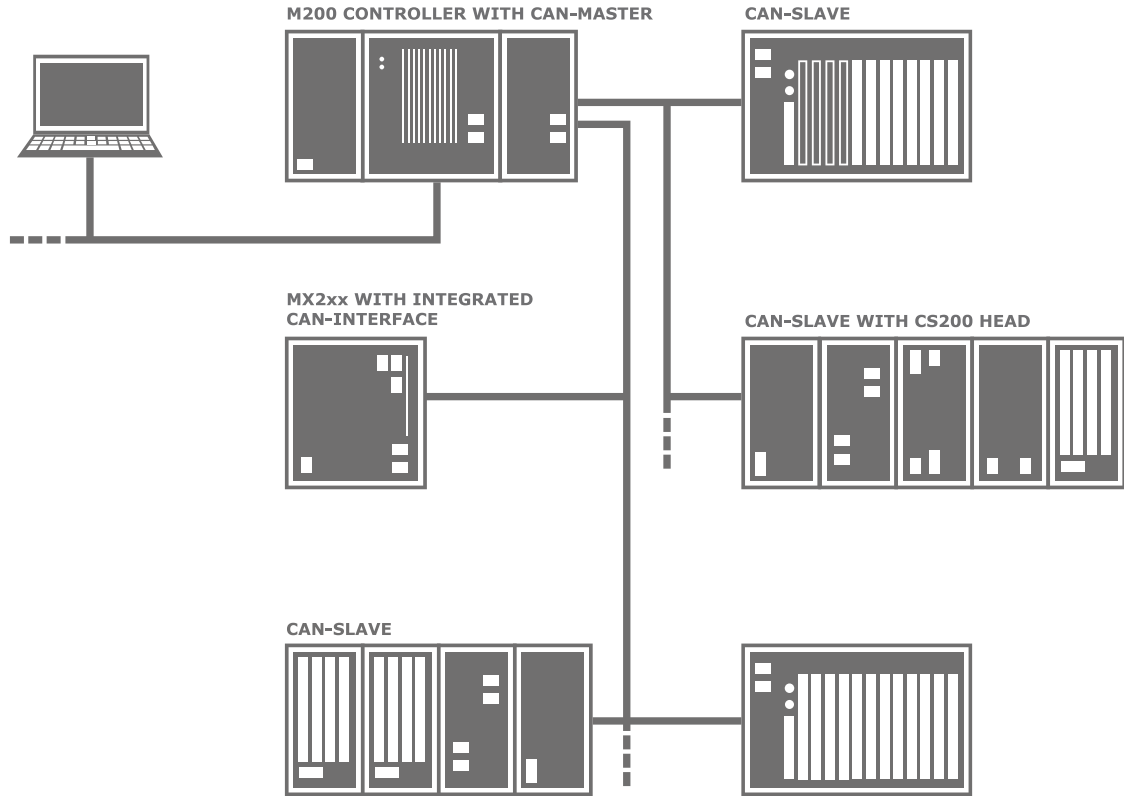
The Bachmann SolutionCenter supports the commissioning and diagnostics of CAN and CANopen networks with integrated tools. With a few mouse clicks a network can be configured from standard EDS files and transferred to the controller. Thanks to the simple interface to the application program and to the commissioning tools a signal test can be executed immediately.

Features

- Managing EDS files in the device catalog
- Online and offline configuration of networks
- Bus scan of online networks for convenient creation of a configuration
- Graphic network presentation
- Graphic display of the PDO mappings
- Tabular editor for network parameters
- Editors for specific device parameters
- Tabular editor for the object directory enables adding, changing, and deleting of network variables
- Fast workflow for the creation of standard configurations

The CAN monitor enables more extensive diagnostics in the Bachmann SolutionCenter. It offers dialogs for:

- Direct SDO access
- NMT and LSS commands
- PDO triggering
- Access to emergency lists



▼ Possible topology: CANopen