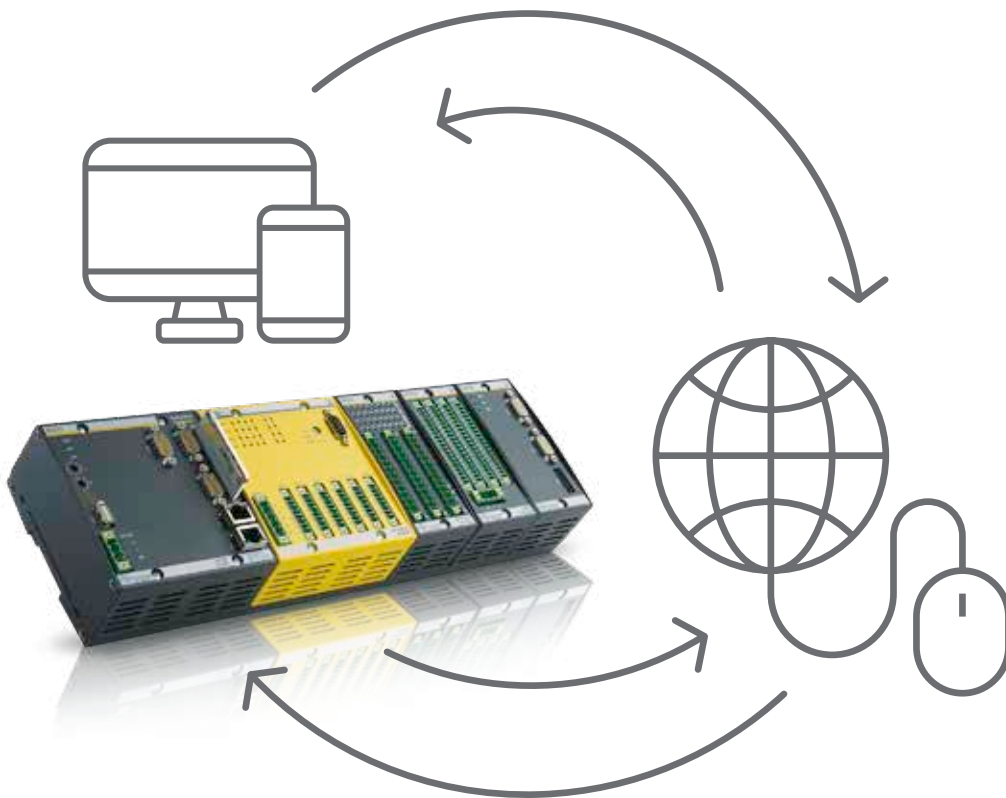


Web Visualization

Controlling and monitoring processes.



Welcome to the Future

Welcome to Bachmann. For over 40 years we have been driving progress in automation and are leaders in the automation of wind power plants. How do we do it? With complete system solutions and technologies that not only develop with time but keep a clear step ahead of it.

That's why leading companies in the sectors for wind, renewable energy, machine building, and the marine and offshore sector rely on the experience, innovation capability and future technologies of Bachmann. Regardless of the sector or requirements profile, our maxim is always the same:

Finding the best and most future-proof automation solution.

This also applies to the "visualization" issue: With M1 webMI pro Bachmann is bringing a new product to the market that revolutionizes the world of visualization.



▼ Bachmann automation solutions enable you to set new directions – round the globe and round the clock.



Visualization of the Future

M1 webMI pro

Intuitive operation, simple use of Internet applications anywhere and anytime – smartphones and tablets with Internet access have long become an indispensable part of the consumer sector. Users no longer consider the mobility they offer as a special luxury but as a fundamental requirement of state-of-the-art communications. The new M1 webMI pro from Bachmann electronic at last now integrates these features in the world of automation.

M1 webMI pro is a pure web visualization that is directly integrated on the PLC. Each M1 controller thus becomes the central server for fixed or mobile HMI devices.

Complex visualization solutions in the field, separate applications, laborious handling of different terminal devices and screen resolutions: with M1 webMI pro finally consigned to history!

▼ Operation and visualization of different devices – when and where you need it.



BENEFITS

- *Value display with high refresh rate*
- *Any browser-based device becomes an HMI*
- *Operation and visualization when and where you need it*
- *Loss-free scaling on all screen sizes*
- *As safe as Internet banking (HTTPS)*
- *Short refresh in the browser instead of time-consuming software rollouts*
- *Application used by different devices (smartphone, tablet or stationary HMI devices)*
- *Integration in higher-level SCADA applications*

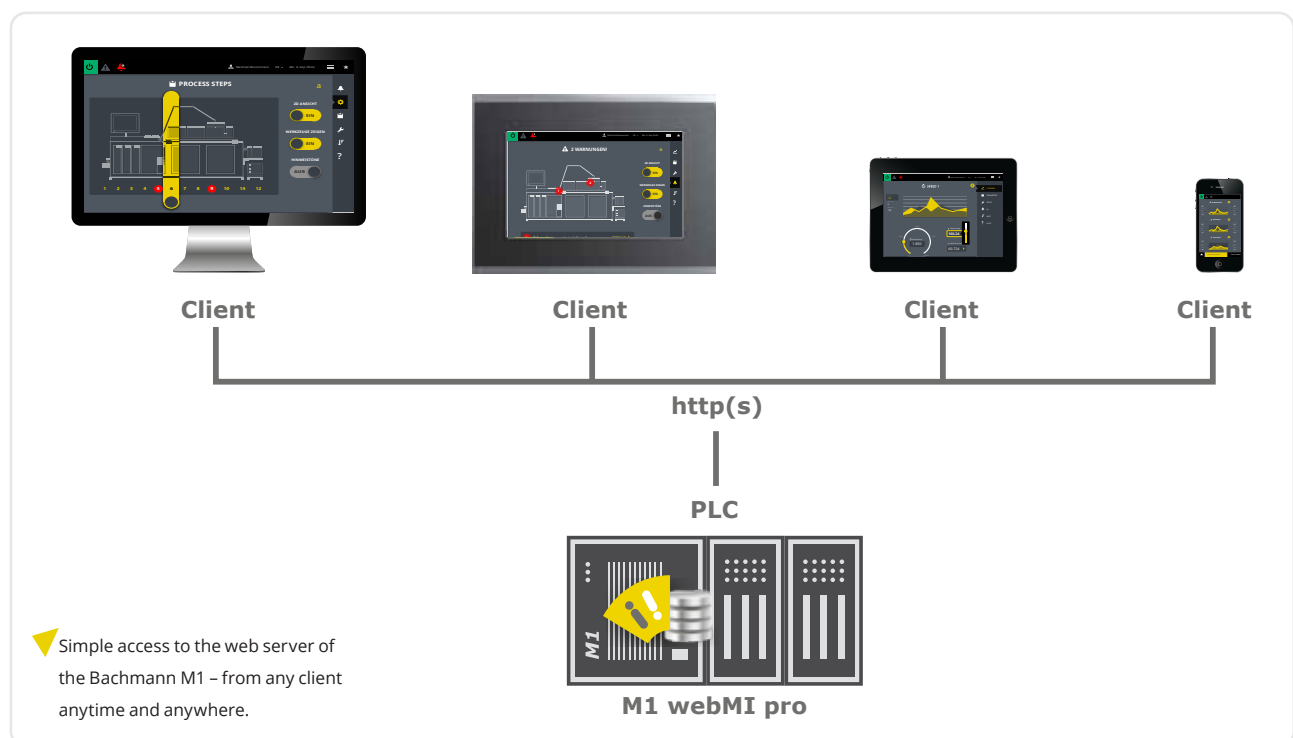
Everything is Getting Simpler and More Mobile

The latest communication technologies, such as a secure web server that is directly installed on the M1 controller enable the connection of any visualization devices such as smartphones and tablets but also powerful operator terminals. This provides access to the application from any location and at any time.

Perfect graphic results

The integration in the powerful Bachmann M1 controller ensures maximum performance. Display flicker: no chance! Even with data refresh rates of well below 100 ms and hundreds of animated graphic elements.

The viewing of an M1 webMI pro visualization page immediately demonstrates the extraordinary benefits of HTML5 and SVG (scalable vector graphics), the basis for all graphic objects: Perfect graphic results can be achieved without any losses in quality when scaling and zooming.

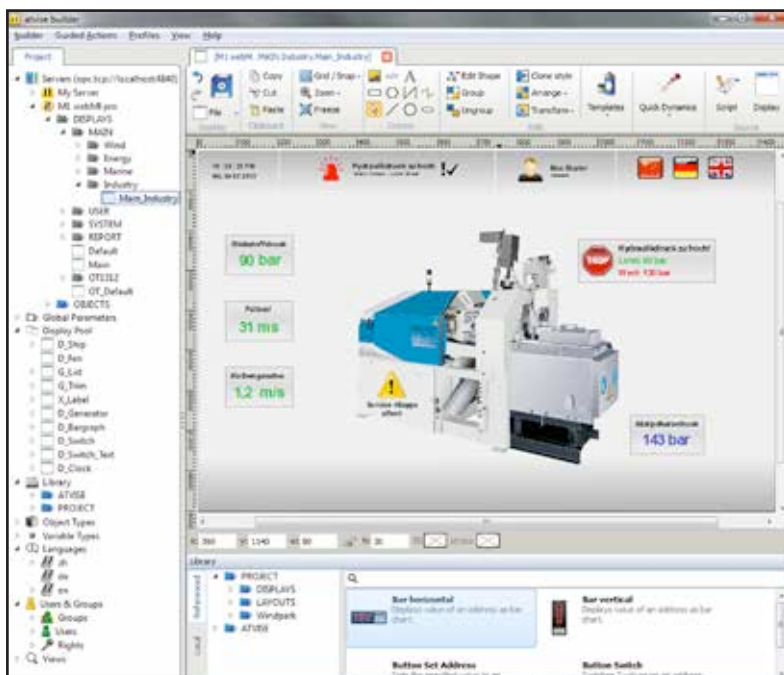


Increased Efficiency Included

The full graphics project engineering is implemented with the “atvise builder” engineering tool. This is used to draw process pictures, configure animations and events as well as for other settings. No special knowledge of programming is required. In addition to this, all the functions of a leading HMI solution are supported, such as automatic alarming, the storing of trend values, trend analysis, user management, access security and multi-lingual functionality. The free programming of special requirements placed on the HMI can be implemented with client-based Java scripts.

Once the visualization is completed, this is transferred to the web server via FTP with just a single click. This makes the delivery of visualizations to large and distributed installations such as wind farms and machinery child's play. Time-consuming software installations or restarts of the HMI devices involved become completely unnecessary. The latest version of the application is immediately visible as soon as a client connects with the central web server. All operator units are automatically brought up-to-date. Anytime and anywhere.

Visualization made easy with the “atvise builder” engineering tool for fully graphical project engineering.



CONCLUSION

Many permanently installed devices become unnecessary, thanks to the flexible access options to the M1 web server. This saves time, costs and unnecessary effort.

M1 webMI pro not only makes the visualization more mobile, but also more efficient.

bachmann.



www.bachmann.info

Web Visualization EN | Subject to alterations without notice
© 05/2021 by Bachmann electronic

