

the power to control

bachmann.

HMI Systems

For better understanding between man and machine.





The Future of Visualization

Multi-touch, multi-task and multi-functional

Optimum performance

Brilliant, fast, fault-free, robust, efficient – the HMI systems of the next generation meet all the requirements placed on the operation and visualization of complex systems. The combination of powerful processors and state-of-the-art touch screens guarantees the trouble-free visualization of complex graphic user interfaces. The result: Greater efficiency in the control of large data volumes.

Maximum flexibility

With its Web terminal OT1200, panel PC OT1300 and the OT1400 product series for support arm mounting, Bachmann electronic offers a state-of-the-art portfolio for a very wide range of applications and performance classes. These naturally feature extensive configuration options as well as allowing customization, such as for adapting the front plate to your corporate design or customized software solutions.

100% quality

Bachmann products and technologies are renowned for their robustness, durability and “made in Austria” production quality. Reliability is ensured with 48-hour run-in tests in the climatic chamber, which every visualization device must undergo.

Perfect integration

As system suppliers, Bachmann can offer a level of integration for components that is unique to the market. Controller, visualization software and HMI hardware are perfectly matched for the long term trouble-free and economical use of systems.

Ask us for a tailored HMI application for your company.



Scalable Performance

The right performance class for every application



100 % series tests

For absolute reliability and long lifespan



Brilliant multi-touch displays

For optimal representation and intuitive operation



Wide-screen diagonals from 7" to 24"

For modern optics in every size



Ultra-fast flash storage media

For performant data handling



0 to 60 °C operating temperature

For coolness in hot environments

OT1200 Web Terminal

Interactive, powerful, cost-efficient

Zooming, swiping, scrolling ... the handling of the web terminals is as easy as operating your smartphone. With a powerful processor, 2D/3D graphics controllers and the most modern touch screens, the terminals are ideally equipped for small and medium-sized visualizations. For the touch technology you can choose between the cost-efficient analog-resistive touch screen and the high quality projective-capacitive multi-touch screen, depending on your requirements. Both variants otherwise have the same features, including the modern design.



BENEFITS

- **Perfect display**
Very good viewing angle, bright picture and strong colors in the widescreen format from 7" to 10.1" and 12.1" right up to 15.6" with full HD resolution, optionally with multi-touch
- **Integrated**
Perfectly adapted for Web visualizations, especially advise®
- **Cost-efficient**
Optimum price-performance ratio thanks to well thought-out functions
- **Powerful**
Freescale ARM® Cortex®-A9 i.MX6Dual+ processor and ultra-fast CFast mass memory
- **Robust**
Standard operating temperature 0 to +60 °C

APPLICATION

The perfect choice for visualizations with web applications such as M1 webMI pro, advise® or other Linux-based visualization solutions.

OT1300 Panel PC

Scalable, versatile, tailor-made

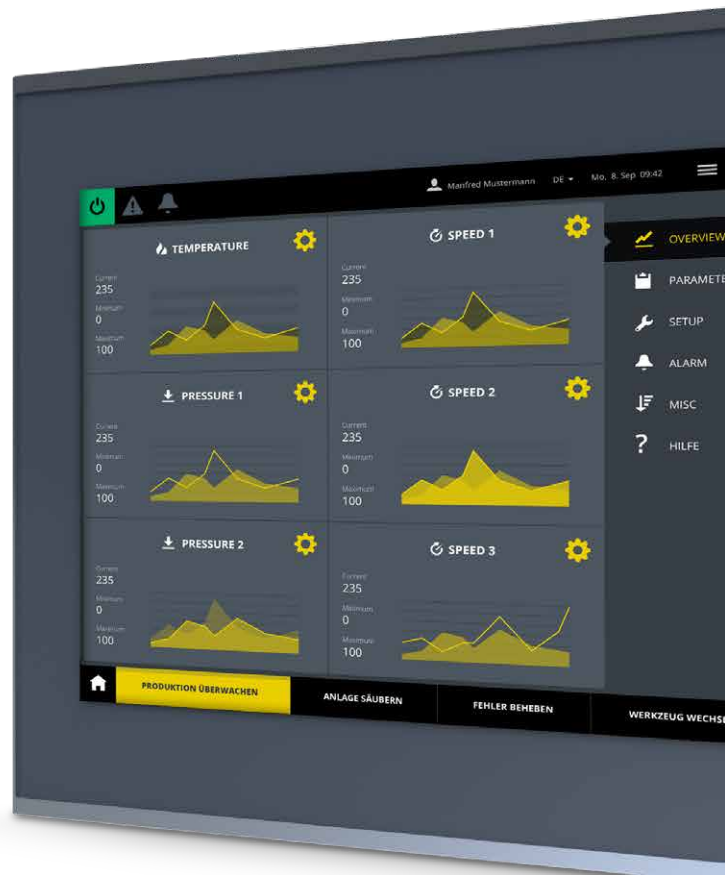
An application can only perform at full capacity if it is configured to the specific requirements at hand. The OT1300 series therefore offers a number of options – from the selection of the mass memory and operating system to different display diagonals, right up to the corporate design of the front plate.

BENEFITS

- **Intuitive**
Graphically complex user interfaces
- **Powerful**
Processing of large data volumes
- **Modular**
Broad selection between 5 performance variants (e.g. Intel® Core™ i7, Gen. 11th., high-end processor), storage media from 16 to 512 GB (CFast, SSD), 9 diagonals from 10" to 21.5" and operating systems (Windows 10 IoT Enterprise)
- **Open**
Customer-specific interface extensions possible
- **Integrated**
Perfectly designed for web visualizations with the atvise® technology

APPLICATION

Medium to large machine applications in industrial environments and renewable energy applications.



OT1400 Panel PC

Independent, flexible, cost-efficient

Designed for free-standing operation in industrial environments, the OT1400 panel PCs can be positioned directly on swing arms or brackets or on plinths. This allows operator-friendly use at different access points without restricted viewing angles and without the need for supporting control panels or cabinet doors.

Swing arm panel PCs are widely used in traditional mechanical engineering applications such as manufacturing cells, intralogistics systems, packaging machines or machine tools (such as presses). Very often these panels also include real-time control elements and an emergency stop button. The composition of the control elements is always customer-

specific or sometimes even machine-specific. The trend towards decentralisation in automation technology means that traditional installation locations for control cabinet Panel PCs are becoming less important. As a result, mounting arm systems are becoming the preferred solution for mounting and integrating Panel PCs.



BENEFITS

- **Versatile**
Wide selection of screen size, performance class and memory storage options
- **Flexible**
Free selection and arrangement of all haptic control elements
- **Modern design**
Projected capacitive, multi-touch operation and bright full hd widescreen displays ranging from 15.6" to 24"
- **Secure**
Contains supplementary access control elements
- **Durable**
Thanks to industrial-grade components

APPLICATION

Medium to large machine applications in industrial environments.

Perfect HMI Portfolio

Our visualization solutions for your success



**SCADA
webMI**

M1 webMI pro

Visualize in pure Web technology directly on the M1 control platform!

- Your Web visualization integrated directly into the M1 control system
- Performant visualization with low footprint
- Operate and observe on a wide variety of terminal devices through a standard browser
- Integrated alarming and historization of variables
- User management and access security



atvise® hmi

Performant Web visualization combined with a wide range of OPC UA features and efficient engineering.

- Vertical data processing by means of OPC UA DA, HA, A&C, methods
- Data acquisition by means of OPC UA, S7 Step7/TIA, Ethernet/IP, Modbus, BACNet
- Vertical object orientation in the engineering of graphics and data objects
- Alarm management with high-level features (shelving, suppression, deactivation)
- Historization with integrated aggregation
- Performant server-scripting engine



atvise® bundles

Take advantage of the best of both worlds with the combination of Bachmann HMI terminals and atvise® visualization products!

- Visualization server & operating device in one
- Everything from a single vendor
- Preinstalled delivery
- Scalable from the smallest visualizations to full-grown SCADA applications
- Support for cascaded architectures

bachmann.



www.bachmann.info

HMI Systems EN | Subject to alterations without notice
© 10/2023 by Bachmann electronic

