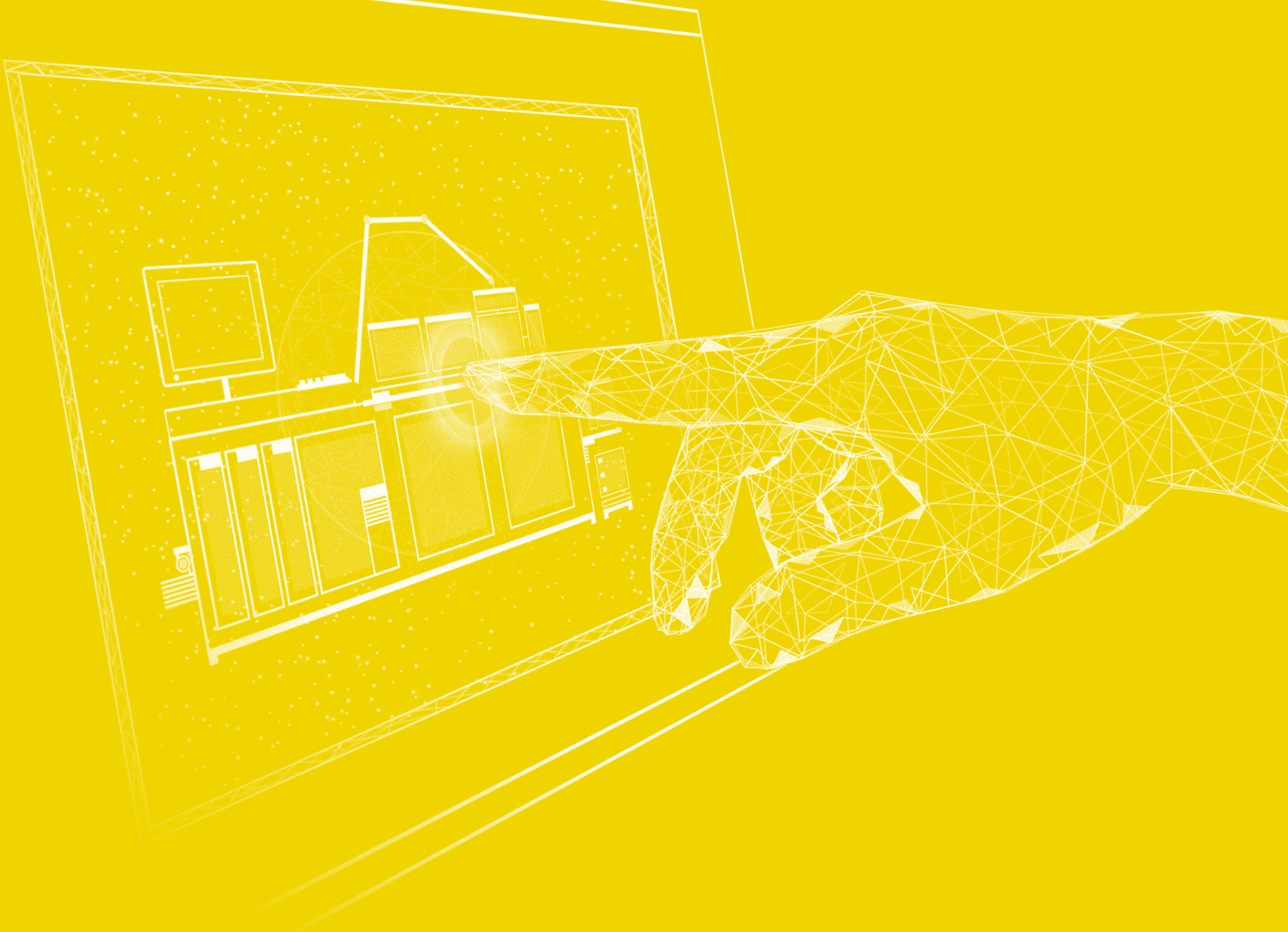


All in One

Machine and Plant Visualization Solutions.



A powerful combination

— *Customized visualizations of every size*

The combination of atvise® with the right operating device, delivers a perfectly coordinated, complete solution for your machine and plant visualization. The modern panel PCs are designed for industrial use and offer a wide selection of performance classes and display variants.

Unique features:



Scalable performance

More than 800 device variants from inexpensive ARM CPUs to high-end Intel Core i7 CPUs



Brilliant multi-touch displays

High-quality, easy to use displays with wide viewing angles to ensure optimal presentation



Everything on board

Coordinated products consisting of operator panels, visualization software and an industrial browser, all from a single source.



Flexible architectures

With web and OPC UA as open interfaces, our bundles can be used in any architecture



Widescreen diagonals from 7" to 24"

For a modern look in any size to match your application



Service

We will guide you from start to finish (specification, conception, implementation)

We will happily guide you through the implementation process and are readily available to support your visualization project.

atvise[®] bundles:





OT1200 HMI Bundle

for straightforward visualizations

The price-optimized OT1200 product



family is tailored to web visualizations and streamlined to the essentials.

Ranging from 7" to 15.6", the high-quality widescreen displays provide an impressive, brilliant display and a long service life.



OT1300 HMI Bundle

for ambitious visualizations



The versatile OT1300 product family is characterized by flexibility and scalability. The modular concept offers a large selection of CPU performance classes and displays from 10.1" to 21.5". The OT1300 HMI Bundle is particularly suitable for demanding machine visualizations, data recording and data preprocessing for higher-level visualizations.



OT1400 HMI Bundle

for challenging visualizations



The operator terminals of the OT1400 product series combine modern technology, flexibility, long-term availability and a modern design. Haptic operating elements such as buttons and switches can be freely selected and flexibly arranged on the device. The large selection of screen diagonals 15.6" to 24", performance classes and mass storage options ensure the optimal ratio between price and performance.

OT1300 SCADA Bundle

for higher-level visualizations



When it comes to the powerful operator panels of the OT1300 product families, the full range of atvise® SCADA features become available even under rough environmental conditions. Subordinate OT1200 and OT1300 HMI bundles can be easily integrated as a data source and in alarm management. Visually appealing OT1300 support arm versions are also available depending on the installation situation.

Unique benefits

Everything from a single source

Plug & Play Complete Solution

- All software components pre-installed and licensed
- Reduced project complexity
- Generic products in use, no LOCK-IN effect

Service

- Access to expert visualization knowledge
- Support from start to finish (conception, implementation, integration)

Coordinated products

- Web-capable HMI & SCADA server
- Industrial browser designed for 24/7 operation
- Easy commissioning through prepared configuration interfaces

Clearly regulated responsibility

- One contact for all application areas
- Quick problem solving through short communication channels

Flexibility

Product variants

- Over 800 product variants in a wide variety of performance classes
- Operator panels combined with atvise® hmi or atvise® scada as required

Expandability

- Visualization projects can be expanded at any time through online engineering
- Easy connection to third party applications via web or OPC UA

Engineering

One tool for everyone

- An engineering tool for HMI and SCADA applications
- Reusable graphic objects for a wide variety of applications

Object orientation

- Consistent object orientation of graphic objects and data structures
- More efficient engineering through template-based work

Modern development methods

- Collaboration through multi-user engineering
- Application updates can be easily installed via online import

Cascading

- Simple cascading expansion after successful implementation of the on-site visualization
- Consistent cascading of process data, alarm information and historical data via OPC UA

Networking

OPC UA

- Event-based transfer of process data via OPC UA data access
- Synchronization of alarm information via OPC UA alarms & conditions
- Consistent transfer of historical archives via OPC UA Historical Access and compression of raw values via OPC UA Aggregates
- Calling and providing remote procedure calls via OPC UA methods
- Individually configurable access control based on the OPC UA security model

Further Interfaces

- Native driver connection via atvise® connect expansion module
- Communication with Siemens S7 300/400/1200/1500 and Rockwell Compact/Control Logix controllers
- Simple connection of a large number of control types via Modbus TCP
- Integrated BACNet connection with automatic station search, KNX support
- Flexible data transmission to higher-level systems via MQTT



www.atvise.com

atvise® bundles EN | Subject to modifications
© 06/2023 by Bachmann electronic GmbH

