

the power to control

bachmann.



# Ordering and Installing Software Licenses

User Manual

© 2023 Bachmann electronic GmbH

All rights reserved.

All operating instructions, manuals, technical descriptions and software supplied by Bachmann electronic GmbH ("Bachmann") are copyright protected. The copying, distributing and/or other processing (e.g. through photocopying, microfilming, translating in machine readable form or transferring to any electronic medium) are not permitted. Any, even partial, use of the before-mentioned material which is in contradiction to this condition will be criminally prosecuted, unless Bachmann prior written consent has been obtained. All further rights and obligations in Bachmann software are specified in the "Software License Agreement" (SLA).

Where a reference is made to products and/or services from third parties in this manual, this is done only for the purpose of example or is a mere recommendation from Bachmann. Bachmann makes no guarantee in regard to the selection, specification and/or usability of these goods and services. The naming and/or representation of trademarks which are not owned by Bachmann are for information purposes only and all rights remain with the respective owner of the trademark. The OPC Foundation Certified for Compliance logo indicates that this product has been tested by an independent certification lab and certified to be compliant with the OPC Specifications DA2.05a/DA3.00. The OPC Foundation Certified for Compliance logo is a trademark and as such the property of The OPC Foundation and is used under licence.

**Disclaimer:**

We have carefully checked the contents of this document for consistency with the technical features and specifications of the relevant hard- and software. Despite this check, some deviations cannot be entirely excluded, which is why we cannot guarantee full consistency. However, the information in this document is regularly reviewed and corrections will be included in subsequent editions. Suggestions for corrections and improvements are very welcome. Bachmann reserves the right to change the technical specification of the hard- and/or software or the documentation without advance notice.

Bachmann electronic GmbH  
Kreuzaeckerweg 33  
6800 Feldkirch  
Austria  
Telephone: +43 5522 3497-0  
E-mail: [info@bachmann.info](mailto:info@bachmann.info)  
Internet: [www.bachmann.info](http://www.bachmann.info)



# Table of Contents

<b>1</b>	<b>About this Manual</b> .....	<b>5</b>
1.1	Presentations in this Manual .....	5
1.2	Technical Support .....	5
<b>2</b>	<b>Software Products and Order Numbers</b> .....	<b>6</b>
<b>3</b>	<b>Ordering and Installing Runtime Licenses</b> .....	<b>7</b>
3.1	Basic Information about Runtime Licenses .....	7
3.2	Ordering the License together with the Controller Hardware .....	7
3.3	Ordering the License at a later Time .....	7
3.3.1	Generating the License File .....	7
3.3.2	Reading the Serial Number .....	7
3.3.3	Ordering the License File .....	9
3.3.4	Installing the License File .....	9
<b>4</b>	<b>Saving the License File</b> .....	<b>12</b>
<b>5</b>	<b>Index</b> .....	<b>13</b>



# 1 About this Manual

## 1.1 Presentations in this Manual

Tips are specially marked in this manual.



*Supplemental information and tips.*

The following identifications and symbols are used in the text:

Presentation	Description
1. →	Numbered action steps of a step-by-step procedure
2. →	
➔	Result of an action step
■ List • List	Listing without a specified sequence
➔	Link to elements or sections of this manual or reference to other applicable documents
<i>"Display/GUI"</i>	Screen element, e.g. button, menu item, dialog, tab, checkbox, radio button, input field, drop-down list
<i>"Menu → Submenu"</i>	Menu path, e.g. sequence of main menu and submenu, sequence in context menus
[Key]	Key on the computer keyboard Control on the device e.g. button, switch Unit symbol e.g. time stamp [s]
CODE	Program code e.g. function block, parameter, keyword, variable File name, directory path
<b>command</b>	Command, programming functions

## 1.2 Technical Support

For problems or queries please contact Bachmann support:

- Email: [support@bachmann.info](mailto:support@bachmann.info)
- Customer help-desk: ➔ <https://support.bachmann.info/>

## 2 Software Products and Order Numbers

Some software products require a license key on the controller.

For these products there are different order numbers:

- Runtime license

A runtime license is independent of the version of a software product and does not change if new software versions are released. For each controller on which the software is operated a runtime license is required, however the individual license can also be linked to the serial number of the CFC card, USB stick, a USB flash or to the serial number of a CPU. The license depends on the controller hardware and is delivered as a file.

- Installer

The installer is an executed file for Windows. The installer contains all components which are required to configure and operate the software, and also the user manual. Generally, when ordering, the installer with the latest available version of the software is delivered. On request it is also possible to order an installer with previous software versions. The delivery of the installer is done by sending a download link.

## 3 Ordering and Installing Runtime Licenses

### 3.1 Basic Information about Runtime Licenses

The runtime license depends on the CPU hardware. One of the 3 parameters can be selected:



*The Compact Flash, CFast or USB stick serial numbers are not part of the CPU hardware, these storage media can also be used with other CPU hardware.*

- Serial number of the Compact Flash or CFast memory card
- Serial number of the USB stick that is plugged into the controller during operation of the software
- Serial number of the processor module (controller CPU)

Runtime licenses can either be ordered together with the Bachmann Controller hardware (⇒ [Chapter 3.2 "Ordering the License together with the Controller Hardware" on page 7](#)), or the runtime licenses can be ordered at a later time (⇒ [Chapter 3.3 "Ordering the License at a later Time" on page 7](#)).

### 3.2 Ordering the License together with the Controller Hardware

If customer-specific sets (parts list articles) are ordered, the license file will be stored on the controller before shipping. No additional steps are necessary for the customer. It is only necessary to install and configure the software modules via the perspective "[Device Manager](#)" in the SolutionCenter. The license is found automatically.

### 3.3 Ordering the License at a later Time

#### 3.3.1 Generating the License File

You need to transmit the serial number of either the memory card, the processor module or the USB stick to the e-mail address ⇒ [order@bachmann.info](mailto:order@bachmann.info). Bachmann electronic GmbH will generate a license file for the requested software product and sends it back to you by e-mail or offers it for download. This license file enables the activation of the software by the customer.

The workflow is described in detail in the next section.

#### 3.3.2 Reading the Serial Number

In the SolutionCenter, you can read the serial number of the memory card, the processor module or the USB stick. You can copy it to the Windows clipboard.

## Compact Flash or CFast memory card

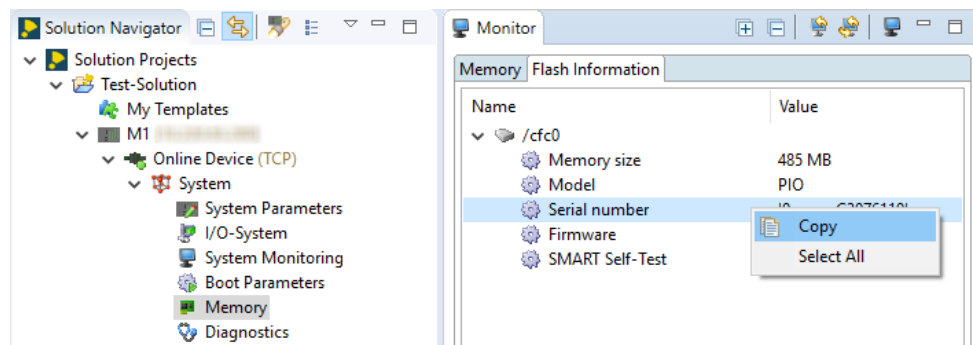


Fig. 1: License handling – Copying serial number from Compact Flash or CFast memory card

Procedure:

1. Select "Online Device → System → Memory" in the navigator view.
2. In the monitor view in the "Flash Media Information" tab, select the "Serial number" line and copy the selection to the clipboard via "Copy" context menu.
  - ➔ Continue with ➔ Chapter 3.3.3 "Ordering the License File" on page 9

## Processor module

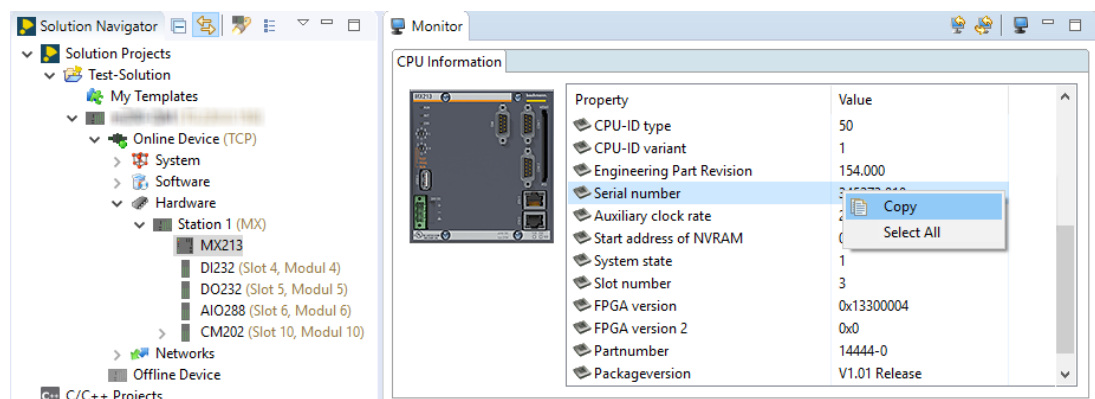


Fig. 2: License handling – Copying serial number from processor module

Procedure:

1. Select the processor module in the Navigator view under "Online Device → Hardware → Station 1".
2. In the monitor view in the "CPU Information" tab, select the "Serial number" line and copy the selection to the clipboard via "Copy" context menu.
  - ➔ Continue with ➔ Chapter 3.3.3 "Ordering the License File" on page 9



## USB stick

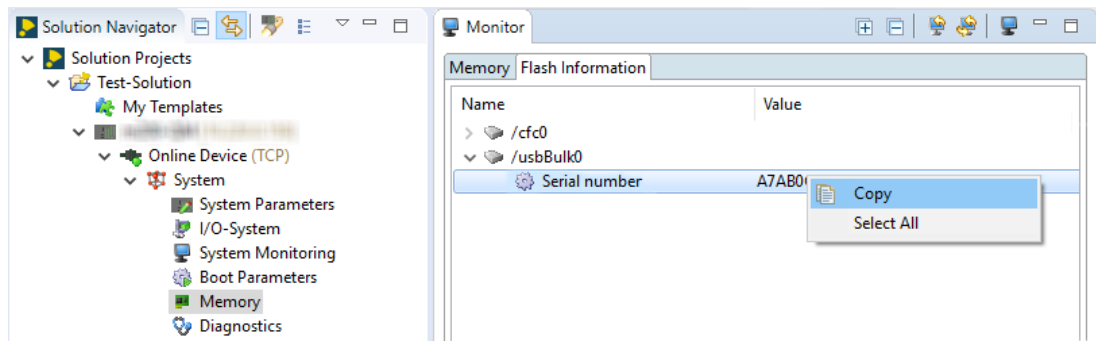


Fig. 3: License handling – Copy serial number from USB stick

Procedure:

1. ➤ Select “Online Device → System → Memory” in the navigator view.
2. ➤ In the monitor view in the “Flash Media Information” tab, select the “Serial number” line and copy the selection to the clipboard via “Copy” context menu.
  - Continue with ➔ Chapter 3.3.3 “Ordering the License File” on page 9

### 3.3.3 Ordering the License File

Procedure:

- Order the license file via webshop and continue with:

➔ Chapter 3.3.4 “Installing the License File” on page 9

– or –

If there is still no access to the webshop, send the serial number and description of the software product you need the license key for to the e-mail address ➔ [order@bachmann.info](mailto:order@bachmann.info).

- Bachmann electronic GmbH will generate a license file in a short time for the requested software product and sends it back to you by e-mail or offers it for download.

### 3.3.4 Installing the License File

#### Using the Default Directory

The license file is simply copied to the storage medium of the controller. The storage directory can be configured in the SolutionCenter. If the path specification is missing, the controller searches for the license file in the default directory.

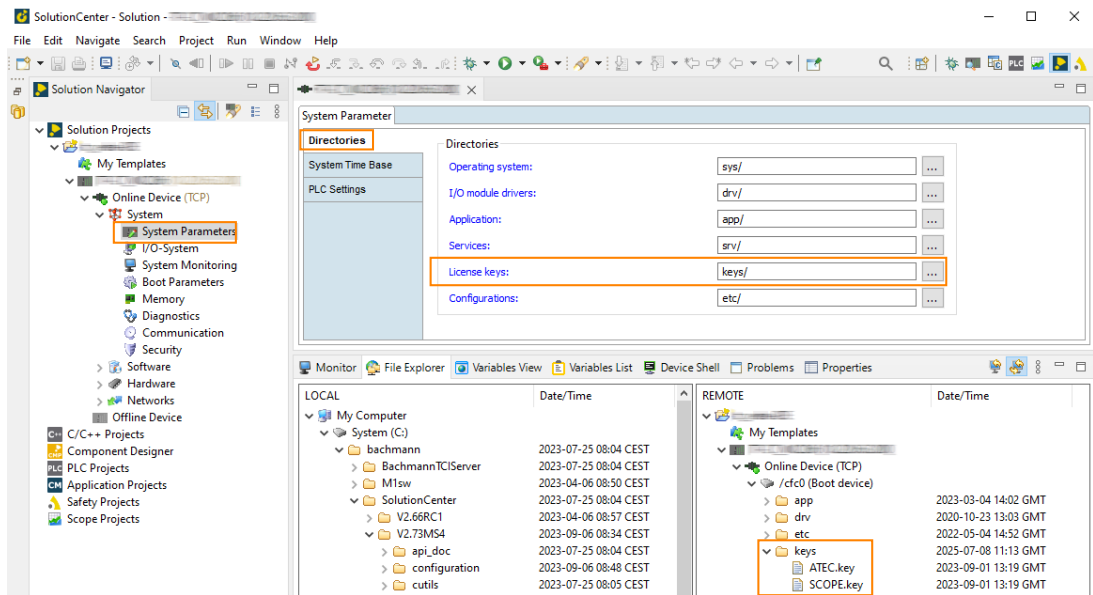


Fig. 4: License handling – Installing the license file



*If several software products need to be executed on the same processor module, for each product a separate license file is required.*

Procedure:

1. In the *“File Explorer”* copy the license file to the default directory `keys/` on the boot device.

– or –

In the *“File Explorer”* copy the license file to the default directory `keys/` on the USB stick.



*If the license is bound to an USB stick, it must be available in the default directory on the USB stick.*

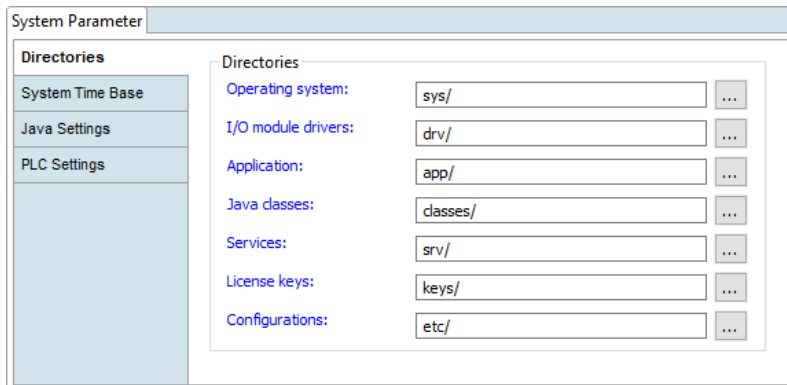
2. Plug in the USB stick on the controller.

### Adapting a Directory (optional)

Procedure:

1. In the Navigator view, double-click *“Online Device → System → System Parameters”*.
  - ➔ The configurator view opens.


2. In the configurator view in the *"Directories"* group, under *"License keys"*, select the desired directory.



The screenshot shows a software configurator window titled "System Parameter". On the left, there is a vertical navigation pane with the following items: "Directories" (highlighted), "System Time Base", "Java Settings", and "PLC Settings". The main area of the window is titled "Directories" and contains a list of configuration items, each with a text input field and a browse button (three dots):

Category	Value	Action
Operating system:	sys/	...
I/O module drivers:	drv/	...
Application:	app/	...
Java classes:	classes/	...
Services:	srv/	...
License keys:	keys/	...
Configurations:	etc/	...

Fig. 5: License handling – System Parameters

3. Save with .

## 4 Saving the License File

The license file is stored on the data carrier and could thus be deleted unintentionally. Formatting the medium also deletes the license file. If a boot image is copied by the customer to the controller, make sure that the license file will not be overwritten by the license file with the same name and path, as this will replace the valid license file.

Procedure:

- 1.** ➤ Save a backup copy of the license file to another medium (recommended).
- 2.** ➤ If a license file is lost it can be retrieved via Bachmann Selfservice (➔ <https://selfservice.bachmann.info/>).

## 5 Index

### A

Article number. . . . . 6

### B

Backup

License file. . . . . 12

### C

CFast

Serial number. . . . . 7

Compact Flash

Serial number. . . . . 7

### D

Default directory. . . . . 9

Directory

adapt. . . . . 9

### G

Generate

License file. . . . . 7

### I

Identifications. . . . . 5

Installation

license file. . . . . 9

### L

License

runtime. . . . . 7

License file

Backup. . . . . 12

Generate. . . . . 7

installation. . . . . 9

Order. . . . . 9

Order (subsequently). . . . . 7

Order (with controller). . . . . 7

License keys. . . . . 6

### M

Manual

Presentations. . . . . 5

### O

Order

License file. . . . . 9

License file (subsequently). . . . . 7

License file (with controller). . . . . 7

### P

Processor module

Serial number. . . . . 7

### R

Runtime

license. . . . . 7

### S

Serial number. . . . . 7

CFast. . . . . 7

Compact Flash. . . . . 7

Processor module. . . . . 7

read out. . . . . 7

USB stick. . . . . 7

Software

order number. . . . . 6

Support. . . . . 5

### U

USB stick

Serial number. . . . . 7



**bachmann.**



**[www.bachmann.info](http://www.bachmann.info)**

