

▼ Example illustration: terminals



▼ Example illustration: keying

Front Terminals and Terminal Sets

The standard connection technology for digital and analog signals of the M200 control system is implemented with robust spring-loaded or screw-type terminals that can be fixed securely with a screw flange. Our product portfolio has the right connection to suit your requirements: terminals with 3.5 mm pitch for analog signals or high density versions for digital signals, and 5.08 mm pitch terminals for digital signals and power supply connections. Terminals with a 7.62 mm pitch are suitable for signals such as for grid measuring modules as they can meet particularly high requirements with regard to isolation. The front terminals are compatible with the Phoenix Contact COMBICON® connection (5.08 and 7.62 pitch) or miniCOMBICON® (3.5 pitch).

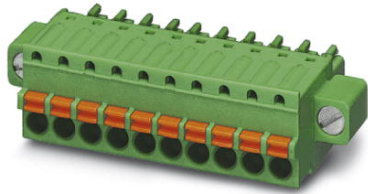
Features depending on version

- Terminals to a proven industry standard
- Space saving pitch, depending on signal type
- Robust fixing via screw flange
- Keying of connector and terminal
- Different connection technologies possible (spring-loaded, screw-type)
- Can be labeled with stickers
- Measurement via test tap possible in part

Technical data of the individual terminals

The following terminal types are contained in terminal sets:

Terminal types	
3.5 pitch	Cage clamp terminals KZ 35/xx
3.5 pitch	Cage clamp terminals narrow KS35/xx old design
3.5 pitch	Cage clamp terminals narrow KS35/xx new design
5.08 pitch	Cage clamp terminals KZ 51/xx
7.62 pitch	Screw-type terminals lateral SS 76/xx
7.62 pitch	Screw-type terminals lateral SS 76/xx inverted
3.5 pitch	Screw-type terminals lateral SS 35/xx
5.08 pitch	Screw-type terminals lateral SS 51/xx
5.08 pitch	Screw-type terminals front SV 51/xx



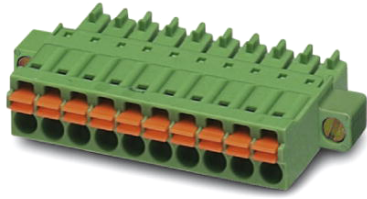
▼ Example illustration

3.5 pitch cage clamp terminals KZ 35/xx

Spring-loaded terminals for rapid connection in push-in contacts with space saving 3.5 mm pitch. The front labeling capability and the test tap using a standard 1-mm-Ø-test pin make this terminal ideally suited for analog signals and digital modules with a large number of channels. The screw flanges also ensure a secure mounting even in rugged environments.

KZ 35/xx

General	
Pitch	3.5 mm
Numbers of pins	2, 3, 4, 5, 6, 7, 8, 10, 12, 16, 19
Nominal current	Up to 8 A with 1.5 mm ²
Nominal voltage	300 V acc. to UL / 160 V acc. to VDE
Rated voltage (III/2)	160 V
Color	Green
Contact surface	Tin, lead-free
Flammability class acc. to UL94	V0
Mounting/Installation	Lateral screw flange M2.5
Labeling	Front side with sticker
Conductors	
Conductor cross-section, rigid, min.	0.14 mm ²
Conductor cross-section, rigid, max.	1.5 mm ²
Conductor cross-section, flexible, min.	0.14 mm ²
Conductor cross-section, flexible, max.	1.5 mm ²
Conductor cross-section wire end ferrule with collar, min.	0.25 mm ²
Conductor cross-section wire end ferrule with collar, max.	0.5 mm ²
AWG acc. to UL/cUL min.	28
AWG acc. to UL/cUL max.	16
Wire end ferrule	Acc. to DIN 46228-4 with insulation collar Cross-section: 0.14 mm ² ; length: 8 mm Cross-section: 0.34 mm ² ; length: 8 mm to 10 mm Cross-section: 0.5 mm ² ; length: 8 mm to 10 mm Cross-section: 0.75 mm ² ; length: 8 mm to 10 mm
Stripping length resp. pin length	8 mm
Tools	
Screw flange	Screwdriver, blade width ≤ 2.5 mm, thickness ≤ 0.4 mm
Screw flange torque max.	0.3 Nm
Spring contact actuator	Screwdriver, blade width ≤ 2.5 mm, thickness ≤ 0.4 mm
Test tap	1-mm-Ø-test pin
Keying	
Keying	By removing the keying pins on the contact and corresponding keying element in the pin housing of the module. For details see section "Keying"
Approvals	
UL/cUL	cULus recognized, VDE
Manufacturer	
Phoenix Contact	FK-MCP 1.5/..-STF-3.5 (.. =number of pins, two-digit)



▼ Example illustration

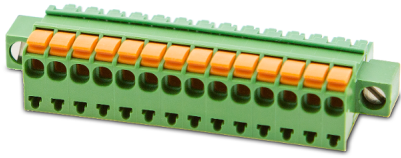
3.5 pitch cage clamp terminals narrow KS 35/xx old design

Narrow design spring-loaded terminals for rapid connection in push-in contacts with space saving 3.5 mm pitch. This terminal is ideally suited for analog signals with a test tap using a standard 1-mm-Ø-test pin. The screw flanges also ensure a secure mounting even in rugged environments.

The design shown here is replaced by the new design because the new version allows labeling on the front.

KS 35/xx old design

General	
Pitch	3.5 mm
Numbers of pins	3, 4, 6, 12, 15, 16, 19, 20
Nominal current	Up to 8 A with 1.5 mm ²
Nominal voltage	150 V acc. to UL / 160 V acc. to VDE
Rated voltage (III/2)	160 V
Color	Green
Contact surface	Tin, lead-free
Flammability class acc. to UL94	V0
Mounting/Installation	Lateral screw flange M2.5
Labeling	Lateral with sticker
Conductors	
Conductor cross-section, rigid, min.	0.2 mm ²
Conductor cross-section, rigid, max.	1.5 mm ²
Conductor cross-section, flexible, min.	0.2 mm ²
Conductor cross-section, flexible, max.	1.5 mm ²
Conductor cross-section wire end ferrule with collar, min.	0.25 mm ²
Conductor cross-section wire end ferrule with collar, max.	0.75 mm ²
AWG acc. to UL/cUL min.	24
AWG acc. to UL/cUL max.	16
Wire end ferrule	Acc. to DIN 46228-4 with insulation collar Cross-section: 0.25 mm ² ; length: 8 mm Cross-section: 0.34 mm ² ; length: 8 mm to 10 mm Cross-section: 0.5 mm ² ; length: 8 mm to 10 mm Cross-section: 0.75 mm ² ; length: 8 mm to 10 mm
Stripping length resp. pin length	8 mm
Tools	
Screw flange	Screwdriver, blade width ≤ 2.5 mm, thickness ≤ 0.4 mm
Screw flange torque max.	0.3 Nm
Spring contact actuator	Screwdriver, blade width ≤ 2.5 mm, thickness ≤ 0.4 mm
Test tap	1-mm-Ø-test pin
Keying	
Keying	By removing the keying pins on the contact and corresponding keying element in the pin housing of the module. For details see section "Keying"
Approvals	
UL/cUL	cULus recognized, VDE
Manufacturer	
Phoenix Contact	FMC 1.5/..-STF-3.5 (.. =number of pins, two-digit)



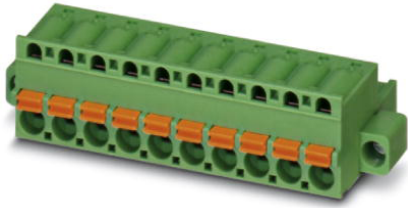
▼ Example illustration

3.5 pitch cage clamp terminals narrow KS35/xx new design

Narrow design spring-loaded terminals for rapid connection in push-in terminals with space saving 3.5 mm pitch. This terminal is ideally suited for analog signals with labeling capability on the front and the test tap using a standard 1-mm-Ø-test pin. The screw flanges also ensure a secure mounting even in rugged environments.

KS 35/xx new design

General	
Pitch	3.5 mm
Numbers of pins	3, 4, 6, 12, 15, 16, 19, 20
Nominal current	Up to 8 A with 1.5 mm ²
Nominal voltage	300 V acc. to UL / 130 V acc. to VDE
Rated voltage (III/2)	130 V (UL 300 V)
Color	Green
Contact surface	Tin, lead-free
Flammability class acc. to UL94	V0
Mounting/Installation	Lateral screw flange M2.5
Labeling	Front side with sticker
Conductors	
Conductor cross-section, rigid, min.	0.14 mm ²
Conductor cross-section, rigid, max.	1.5 mm ²
Conductor cross-section, flexible, min.	0.14 mm ²
Conductor cross-section, flexible, max.	1.0 mm ²
Conductor cross-section wire end ferrule with collar, min.	0.25 mm ²
Conductor cross-section wire end ferrule with collar, max.	0.75 mm ²
AWG acc. to UL/cUL min.	24
AWG acc. to UL/cUL max.	16
Wire end ferrule	According to DIN 46228 T1 / max. 1.5 mm ² According to DIN 46228 T4 / max. 1 mm ²
Stripping length resp. pin length	Min. 8 mm to 11.5 mm
Tools	
Screw flange	Screwdriver, blade width ≤ 3.75 mm, thickness ≤ 0.7 mm
Screw flange torque max.	0.2 Nm
Spring contact actuator	Screwdriver, blade width ≤ 2.75 mm
Test tap	1-mm-Ø-test pin
Keying	
Keying	Keying element "CKF" is inserted on the contact and matches the unmounted keying element in the pin housing of the module. For details see section "Keying"
Approvals	
UL/cUL	cULus recognized, VDE
Manufacturer	
SAURO	CBF..0D8- 0M (.. =number of pins, two-digit)



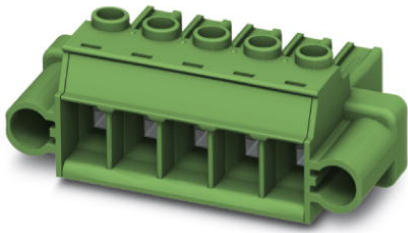
▼ Example illustration

5.08 pitch cage clamp terminals KZ 51/xx

Spring-loaded terminals for rapid connection in push-in contacts with a 5.08 mm pitch. For larger cross-sections up to 2.5 mm² with front labeling capability and the test tap using a standard 1-mm-Ø-test pin, this terminal is ideally suited for digital signals. The screw flanges also ensure a secure mounting even in rugged environments.

KZ 51/xx

General	
Pitch	5.08 mm
Numbers of pins	2, 3, 5, 6, 7, 10, 12, 13, 16
Nominal current	Up to 10 A with 2.5 mm ²
Nominal voltage	250 V
Rated voltage (III/2)	320 V
Color	Green
Contact surface	Tin, lead-free
Flammability class acc. to UL94	V0
Mounting/Installation	Lateral screw flange M2.5
Labeling	Front side with sticker
Conductors	
Conductor cross-section, rigid, min.	0.2 mm ²
Conductor cross-section, rigid, max.	2.5 mm ²
Conductor cross-section, flexible, min.	0.25 mm ²
Conductor cross-section, flexible, max.	2.5 mm ²
Conductor cross-section wire end ferrule with collar, min.	0.25 mm ²
Conductor cross-section wire end ferrule with collar, max.	2.5 mm ²
AWG acc. to UL/cUL min.	26
AWG acc. to UL/cUL max.	12
Wire end ferrule	According to DIN 46228 T1 or T4, shape A
Stripping length resp. pin length	8 mm
Tools	
Screw flange	Screwdriver, blade width ≤ 3.5 mm, thickness ≤ 0.6 mm
Screw flange torque max.	0.3 Nm
Spring contact actuator	Screwdriver, blade width ≤ 3.5 mm, thickness ≤ 0.6 mm
Test tap	2-mm-Ø-test pin and 2.3-mm-Ø-test pin
Keying	
Keying	Keying element "CP-MSTB" is inserted on the contact and matches the unmounted keying element in the pin housing of the module. For details see section "Keying"
Approvals	
UL/cUL	cULus recognized, VDE
Manufacturer	
Phoenix Contact	FKC 2.5/...-STF-5.08 (.. =number of pins, two-digit)



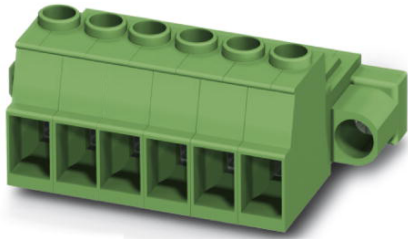
▼ Example illustration

7.62 pitch screw-type terminals lateral SS 76/xx

Screw-type terminals designed for the safe connection of large cross-sections up to 6 mm² and corresponding dielectric strength up to 600 V of grid measuring modules. Can be labeled on the front and with screw flanges that ensure a secure mounting even in rugged environments.

SS 76/xx

General	
Pitch	7.62 mm
Numbers of pins	6, 10, 11
Nominal current	Up to 41 A with 6 mm ²
Nominal voltage	600 V
Rated voltage (III/2)	1000 V
Color	Green
Contact surface	Tin, lead-free
Flammability class acc. to UL94	V0
Mounting/Installation	Lateral screw flange M3
Labeling	Front side with sticker
Conductors	
Conductor cross-section, rigid, min.	0.2 mm ²
Conductor cross-section, rigid, max.	10 mm ²
Conductor cross-section, flexible, min.	0.20 mm ²
Conductor cross-section, flexible, max.	6 mm ²
Conductor cross-section wire end ferrule with collar, min.	0.25 mm ²
Conductor cross-section wire end ferrule with collar, max.	4 mm ²
AWG acc. to UL/cUL min.	24
AWG acc. to UL/cUL max.	8
Wire end ferrule	According to DIN 46228 T1 or T4, shape A
Stripping length resp. pin length	8 mm
Tools	
Screw connection	Screwdriver, blade width ≤ 3.5 mm, thickness ≤ 0.6 mm
Screw connection torque	0.7 Nm to 0.8 Nm
Screw flange	Screwdriver, blade width ≤ 3.5 mm, thickness ≤ 0.6 mm
Screw flange torque max.	0.7 Nm
Test tap	No
Keying	
Keying	Keying element "CP-PC-RD" is inserted on the contact and matches the unmounted keying element in the pin housing of the module. For details see section "Keying"
Approvals	
UL/cUL	cULus recognized, VDE
Manufacturer	
Phoenix Contact	PC 5/ ..-STF1-7.62 (.. =number of pins, two-digit)



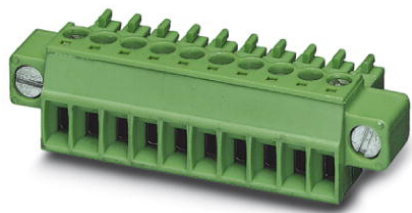
▼ Example illustration

7.62 pitch screw-type terminal lateral SS 76/xx, inverted

Screw-type terminal with inverted connector face for reliable mechanical reverse polarity protection in comparison to SS 76/xx. The SS 76/xx inverted is designed for the safe connection of even large cross-sections up to 6 mm² and corresponding dielectric strength up to 600 V of grid measuring modules. Can be labeled on the front and with screw flanges that ensure a secure mounting even in rugged environments.

SS 76/xx inverted

General	
Pitch	7.62 mm
Numbers of pins	6, 10, 11
Nominal current	Up to 41 A with 6 mm ²
Nominal voltage	600 V
Rated voltage (III/2)	1000 V
Color	Green
Contact surface	Tin, lead-free
Flammability class acc. to UL94	V0
Mounting/Installation	Lateral screw flange M3
Labeling	Front side with sticker
Conductors	
Conductor cross-section, rigid, min.	0.2 mm ²
Conductor cross-section, rigid, max.	10 mm ²
Conductor cross-section, flexible, min.	0.20 mm ²
Conductor cross-section, flexible, max.	6 mm ²
Conductor cross-section wire end ferrule with collar, min.	0.25 mm ²
Conductor cross-section wire end ferrule with collar, max.	4 mm ²
AWG acc. to UL/cUL min.	24
AWG acc. to UL/cUL max.	8
Wire end ferrule	According to DIN 46228 T1 or T4, shape A
Stripping length resp. pin length	8 mm
Tools	
Screw connection	Screwdriver, blade width ≤ 3.5 mm, thickness ≤ 0.6 mm
Screw connection torque	0.7 Nm to 0.8 Nm
Screw flange	Screwdriver, blade width ≤ 3.5 mm, thickness ≤ 0.6 mm
Screw flange torque max.	0.7 Nm
Test tap	No
Keying	
Keying	Keying element "CP-PC-RD" is inserted on the contact and matches the unmounted keying element in the pin housing of the module. For details see section "Keying"
Approvals	
UL/cUL	cULus recognized
Manufacturer	
Phoenix Contact	IPC 5/ ..-STF-7.62 (.. =number of pins, two-digit)



▼ Example illustration

3.5 pitch screw-type terminals lateral SS 35/xx

Screw-type terminal for the safe connection in 3.5 mm pitch and for finer wires up to max. 1.5 mm², as used for analog signals or compact digital modules. The terminals can be labeled on the front. The screw flanges also ensure a secure mounting even in rugged environments.

SS 35/xx

General	
Pitch	3.5 mm
Numbers of pins	2, 3, 4, 6, 7, 14, 16, 19
Nominal current	Up to 8 A with 1.5 mm ²
Nominal voltage	160 V
Rated voltage (III/2)	160 V
Color	Green
Contact surface	Tin, lead-free
Flammability class acc. to UL94	V0
Mounting/Installation	Lateral screw flange M2.5
Labeling	Front side with sticker
Conductors	
Conductor cross-section, rigid, min.	0.14 mm ²
Conductor cross-section, rigid, max.	1.5 mm ²
Conductor cross-section, flexible, min.	0.14 mm ²
Conductor cross-section, flexible, max.	1.5 mm ²
Conductor cross-section wire end ferrule with collar, min.	0.25 mm ²
Conductor cross-section wire end ferrule with collar, max.	0.5 mm ²
AWG acc. to UL/cUL min.	28
AWG acc. to UL/cUL max.	16
Wire end ferrule	According to DIN 46228 T1 or T4, shape A
Stripping length resp. pin length	8 mm
Tools	
Screw connection	Screwdriver, blade width ≤ 2.5 mm, thickness ≤ 0.4 mm
Screw connection torque	0.22 Nm to 0.25 Nm
Screw flange	Screwdriver, blade width ≤ 2.5 mm, thickness ≤ 0.4 mm
Screw flange torque max.	0.3 Nm
Test tap	No
Keying	
Keying	By removing the keying pins on the contact and corresponding keying element in the pin housing of the module. For details see section "Keying"
Approvals	
UL/cUL	cULus recognized, VDE
Manufacturer	
Phoenix Contact	MC 1.5/..-STF-3.5 (.. =number of pins, two-digit)



▼ Example illustration

5.08 pitch screw-type terminals lateral SS 51/xx

Screw-type terminal for the safe connection in 5.08 mm pitch and for larger cross-sections up to 2.5 mm² for digital signals. The terminals can be labeled on the front. The screw flanges also ensure a secure mounting even in rugged environments.

SS 51/xx

General	
Pitch	5.08 mm
Numbers of pins	2, 3, 5, 6, 7, 8, 10, 12, 13, 16
Nominal current	Up to 12 A with 2.5 mm ²
Nominal voltage	250 V
Rated voltage (III/2)	320 V
Color	Green
Contact surface	Tin, lead-free
Flammability class acc. to UL94	V0
Mounting/Installation	Lateral screw flange M2.5
Labeling	Front side with sticker
Conductors	
Conductor cross-section, rigid, min.	0.2 mm ²
Conductor cross-section, rigid, max.	2.5 mm ²
Conductor cross-section, flexible, min.	0.25 mm ²
Conductor cross-section, flexible, max.	2.5 mm ²
Conductor cross-section wire end ferrule with collar, min.	0.25 mm ²
Conductor cross-section wire end ferrule with collar, max.	2.5 mm ²
AWG acc. to UL/cUL min.	30
AWG acc. to UL/cUL max.	12
Wire end ferrule	According to DIN 46228 T1 or T4, shape A
Stripping length resp. pin length	8 mm
Tools	
Screw connection	Screwdriver, blade width ≤ 3.5 mm, thickness ≤ 0.6 mm
Screw connection torque	0.5 Nm to 0.6 Nm
Screw flange	Screwdriver, blade width ≤ 3.5 mm, thickness ≤ 0.6 mm
Screw flange torque max.	0.3 Nm
Test tap	No
Keying	
Keying	Keying element "CP-MSTB" is inserted on the contact and matches the unmounted keying element in the pin housing of the module. For details see section "Keying"
Approvals	
UL/cUL	cULus recognized, VDE
Manufacturer	
Phoenix Contact	MSTB 2.5/..-STF (.. =number of pins, two-digit)



▼ Example illustration

5.08 pitch screw-type terminals front SV 51/xx





Screw-type terminals with screws on front enable convenient mounting and safe connection in 5.08 mm pitch for larger cross-sections up to 2.5 mm² for digital signals. The signals can be measured easily via the front screws. The screw flanges also ensure a secure mounting even in rugged environments.

SV 51/xx

General	
Pitch	5.08 mm
Numbers of pins	2, 3, 7, 16
Nominal current	Up to 12 A with 2.5 mm ²
Nominal voltage	250 V
Rated voltage (III/2)	320 V
Color	Green
Contact surface	Tin, lead-free
Flammability class acc. to UL94	V0
Mounting/Installation	Side screw flange M2.5
Labeling	On side with sticker
Conductors	
Conductor cross-section, rigid, min.	0.2 mm ²
Conductor cross-section, rigid, max.	2.5 mm ²
Conductor cross-section, flexible, min.	0.25 mm ²
Conductor cross-section, flexible, max.	2.5 mm ²
Conductor cross-section wire end ferrule with collar, min.	0.25 mm ²
Conductor cross-section wire end ferrule with collar, max.	2.5 mm ²
AWG acc. to UL/cUL min.	24
AWG acc. to UL/cUL max.	12
Wire end ferrule	According to DIN 46228 T1 or T4, shape A
Stripping length resp. pin length	8 mm
Tools	
Screw connection	Screwdriver, blade width ≤ 3.5 mm, thickness ≤ 0.6 mm
Screw connection torque	0.5 Nm to 0.6 Nm
Screw flange	Screwdriver, blade width ≤ 3.5 mm, thickness ≤ 0.6 mm
Screw flange torque max.	0.3 Nm
Test tap	No (can only be tapped via screw head)
Keying	
Keying	Keying element "CP-MSTB" is inserted on the contact and matches the unmounted keying element in the pin housing of the module. For details see section "Keying"
Approvals	
UL/cUL	cULus recognized, VDE
Manufacturer	
Phoenix Contact	FRONT-MSTB 2.5/..-STF (.. =number of pins, two-digit)

Keying

If several connectors of the same type and with the same number of pins are used on a module, the connector keying can prevent a connector from being plugged into the wrong socket. For this, the connectors/sockets must be equipped with keying elements.

Plug-in keying element	Clip-on keying element		Keying element For 7.62 pitch socket and pin header (SS 76)
	For 3.5 pitch socket	For 5.08 pitch socket	
CP-MSTB	CKF-SC1	CR-MSTB	CP-HCC 4
			

Keying 3.5 pitch connectors

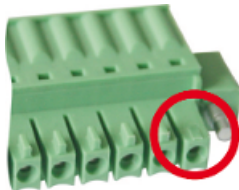
Procedure:

1. Insert plug-in keying element into socket.

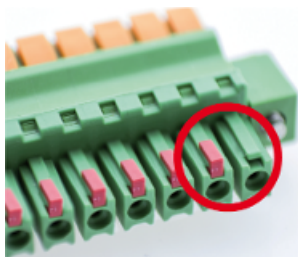


2. Key the corresponding connector.
On the corresponding pin of the connector:

- Remove keying nose. This applies to all connectors with 3.5 pitch, except for the 3.5 pitch cage clamp terminals narrow / KS35/xx **new design**.



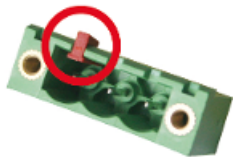
- With the 3.5 pitch cage clamp terminals narrow / KS35/xx new design the keying element CKF-SC1 must be attached.
This way, this connector will only fit into this socket.



Keying 5.08 pitch connectors

Procedure:

1. Insert clip-on keying element into socket.



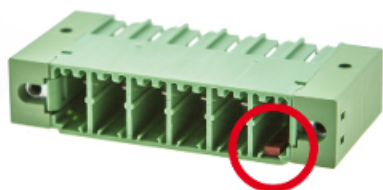
2. Insert plug-in keying element into connector onto the pins on which there is no keying element in the socket.
This way, this connector will only fit into this socket.



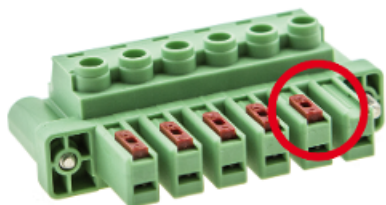
Keying connector with 7.62 pitch (SS 76)

Procedure:

1. Insert keying element CP-HCC4 into socket.



2. The same keying element CP-HCC4 is inserted to the connector.
This way, this connector will only fit into this socket.

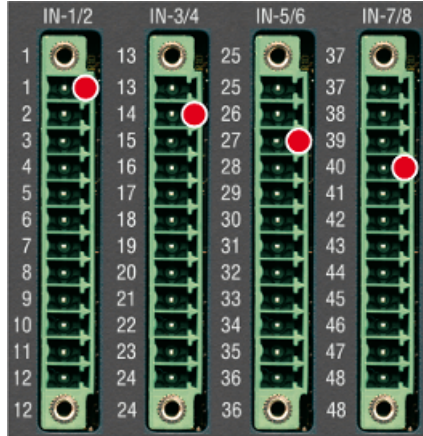


Positioning

Positioning of the keying element depends on the number of pins and the number of connectors.

- **Number of pins > number of connectors**

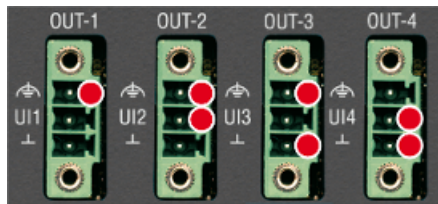
If the number of pins is greater than the number of the same connectors, it is sufficient to plug one keying element per socket:



▼ Positioning – number of pins > number of connectors

- **Number of pins < number of connectors**

If the number of pins is smaller than the number of the same connectors, then keying must occur in binary fashion:



▼ Positioning – number of pins < number of connectors

Order data

Part type designation	Part number	Description
KZ 51/02 B	00012058-00	Terminal 02-pin pitch 5.08; cage clamp with labeling strips
KZ 51/03 B	00012052-00	Terminal 03-pin pitch 5.08; cage clamp with labeling strips
KZ 51/03 B+C	00012052-50	Terminal 03-pin pitch 5.08; cage clamp with labeling strips + keying elements for NT250/48
KZ 51/05 B	00013391-00	Terminal 05-pin pitch 5.08; cage clamp with labeling strips
KZ-ACR222 B	00012056-30	Terminal set Phoenix cage clamp (1x KZ 51/02; 1x KZ 35/10) with labeling strips
SS-AI202/SI B+C	00012354-50	Terminal set Phoenix screw lateral (2x SS 35/03) with labeling strips + keying elements
KS-(AI204/SI //AO204/SI) B+C	00024539-00	Terminal set cage clamp narrow (4x KS 35/03) with labeling strips + keying elements
SS-AI204/SI B+C	00012353-50	Terminal set Phoenix screw lateral (4x SS 35/03) with labeling strips + keying elements
KZ-AI204/1 B	00012053-30	Terminal set Phoenix cage clamp (1x KZ 35/04) with labeling strips
KS-AI204/2 B+C	00013155-50	Terminal set cage clamp narrow (2x KS 35/04) with labeling strips + keying elements
SS-AI204/2 B+C	00011979-50	Terminal set Phoenix screw lateral (2x SS 35/04) with labeling strips + keying elements
KS-AI204/4 B+C	00013156-50	Terminal set cage clamp narrow (4x KS 35/04) with labeling strips + keying elements
SS-AI204/4 B+C	00012008-50	Terminal set Phoenix screw lateral (4x SS 35/04) with labeling strips + keying elements
KZ-AI208/SI B+C ¹⁾	00019091-00	Terminal set Phoenix cage clamp (8x KZ 35/03) with labeling strips + keying elements → not for new developments
KS-AI208/SI B+C	00027409-00	Terminal set cage clamp narrow (8x KS 35/03) with labeling strips + keying elements
SS-AI208/SI B+C	00019866-00	Terminal set Phoenix screw lateral (8x SS 35/03) with labeling strips + keying elements
KZ-AIC206 B+C	00031409-00	Terminal set Phoenix cage clamp (1x KZ 51/02; 2x KZ 35/12; 1x KZ 35/15) with labeling strips + keying elements
KZ-AIC212 B+C	00014396-50	Terminal set Phoenix cage clamp (1x KZ 51/02; 4x KZ 35/12) with labeling strips + keying elements
KZ-AIC214 B+C	00031066-00	Terminal set Phoenix cage clamp (1x KZ 51/02; 3x KZ 35/12; 1x KZ 35/15) with labeling strips + keying elements
KZ-AIO202/SI B+C	00024831-00	Terminal set Phoenix cage clamp (2x KZ 35/05) with labeling strips
KZ-AIO204/SI B+C	00024832-00	Terminal set Phoenix cage clamp (4x KZ 35/05) with labeling strips
KZ-AIO208/SI B+C	00025859-00	Terminal set Phoenix cage clamp (8x KZ 35/05) with labeling strips
KS-AIO208 B+C	00023149-00	Terminal set cage clamp narrow (2x KS 35/20; 1 x KZ 51/02) with labeling strips + keying elements
KS-AIO216 B+C	00023148-00	Terminal set cage clamp narrow (4x KS 35/20; 1 x KZ 51/02) with labeling strips + keying elements
KS-AIO288 B+C ²⁾	00012598-50	Terminal set cage clamp narrow (4x KS 35/19; 1x KZ 51/03) with labeling strips + keying elements → not for new developments
KZ-AIO288 B+C	00026125-00	Terminal set Phoenix cage clamp (4x KZ 35/19; 1x KZ 51/03) with labeling strips + keying elements
SS-AIO288 B+C	00012007-50	Terminal set Phoenix screw lateral (4x SS 35/19; 1x KZ 51/03) with labeling strips + keying elements

¹⁾ Item will be discontinued and replaced by KS-AI208/SI B+C (00027409-00)

²⁾ Item is discontinued and replaced by KZ-AIO288 B+C (00026125-00)

Part type designation	Part number	Description
SV-AIO288 B+C	00010864-50	Terminal set Phoenix screw frontside (4x SS 35/19; 1x SV 51/03) with labeling strips + keying elements
KZ-AO202 B+C	00011980-50	Terminal set Phoenix cage clamp (2x KZ 35/04) with labeling strips + keying elements
SS-AO202/SI B+C	00012378-50	Terminal set Phoenix screw lateral (2x SS 35/03) with labeling strips + keying elements
KS-(AI204/SI //AO204/SI) B+C	00024539-00	Terminal set cage clamp narrow (4x KS 35/03) with labeling strips + keying elements
SS-AO204/SI B+C	00012379-50	Terminal set Phoenix screw lateral (4x SS 35/03) with labeling strips + keying elements
KS-AO208/I B+C	00012948-50	Terminal set Phoenix cage clamp (4x KS 35/06; 1x KZ 51/02) with labeling strips + keying elements
SS-AO208/I B+C	00012009-50	Terminal set Phoenix screw lateral (4x SS 35/06; 1x KZ 51/02) with labeling strips + keying elements
KZ-CNT204 B	00012057-30	Terminal set Phoenix cage clamp (1x KZ 51/02; 1x KZ 51/12) with labeling strips
SV-CNT204 B	00010869-50	Terminal set Phoenix screw frontside (1x SV 51/02; 1x SV 51/12) with labeling strips
KZ-CPC210 B+C+D	00023591-00	Terminal set Phoenix cage clamp (1x KZ 51/03; 3x KS 35/16; 3x KS 35/20) with labeling strips + keying elements + D-sub connector
KZ-DA2384-C B+C	00013832-50	Terminal set Phoenix cage clamp (8x KZ51/12, 1x KZ51/07, 4x KZ35/12, 4x KZ35/04) with labeling strips + keying elements
KZ-DI216 B+C	00011973-50	Terminal set Phoenix cage clamp (3x KZ 51/10) with labeling strips + keying elements
SV-DI216 B+C	00010866-50	Terminal set Phoenix screw frontside (3x SV 51/10) with labeling strips + keying elements
KZ-DI232 B+C	00012004-50	Terminal set Phoenix cage clamp (3x KZ 51/12) with labeling strips + keying elements
SV-DI232 B+C	00010867-50	Terminal set Phoenix screw frontside (3x SV 51/12) with labeling strips + keying elements
KZ-DIO16-C B+C	00012011-50	Terminal set Phoenix cage clamp (1x KZ 51/07; 4x KZ 51/12) with labeling strips + keying elements
KZ-DIO32-C B+C	00012012-50	Terminal set Phoenix cage clamp (1x KZ 51/07; 8x KZ 51/12) with labeling strips + keying elements
KZ-DIO48-C B+C	00012013-50	Terminal set Phoenix cage clamp (1x KZ 51/07; 12x KZ 51/12) with labeling strips + keying elements
KZ-DIO264-C B+C	00012014-50	Terminal set Phoenix cage clamp (1x KZ 51/03; 6x KZ 51/12) with labeling strips + keying elements
KZ-DIO216 B+C	00011974-50	Terminal set Phoenix cage clamp (3x KZ 51/12; 1x KZ 51/02) with labeling strips + keying elements
SV-DIO216 B+C	00012078-50	Terminal set Phoenix screw frontside (3x SV 51/12; 1x SV 51/02) with labeling strips + keying elements
KZ-DIO216/4 B+C	00011975-50	Terminal set Phoenix cage clamp (3x KZ 51/12; 1x KZ 51/02) with labeling strips + keying elements
KZ-DIO232 B+C	00013742-50	Terminal set Phoenix cage clamp (3x KZ 51/12) with labeling strips + keying elements
SS-DIO232 B+C	00015816-00	Terminal set Phoenix screw frontside (3x SS 51/12) with labeling strips + keying elements
KZ-DIO248 B+C	00011976-50	Terminal set Phoenix cage clamp (4x KZ 35/16) with labeling strips + keying elements
SS-DIO248 B+C	00012539-50	Terminal set Phoenix screw lateral (5x SS 35/16) with labeling strips + keying elements

Part type designation	Part number	Description
KZ-DIO264 B+C	00011977-50	Terminal set Phoenix cage clamp (5x KZ 35/16) with labeling strips + keying elements
KZ-DIO280 B+C	00011978-50	Terminal set Phoenix cage clamp (6x KZ 35/16) with labeling strips + keying elements
SS-DIO280 B+C	00012538-50	Terminal set Phoenix screw lateral (6x SS 35/16) with labeling strips + keying elements
KZ-DMS202 B	00012054-30	Terminal set Phoenix cage clamp (1x KZ 51/02; 1x KZ 35/03) with labeling strips
KZ-DO216B+C	00012005-50	Terminal set Phoenix cage clamp (3x KZ 51/10) with labeling strips + keying elements
SV-DO216 B+C	00010865-50	Terminal set Phoenix screw frontside (3x SV 51/10) with labeling strips + keying elements
KZ-DO232B+C	00012006-50	Terminal set Phoenix cage clamp (3x KZ 51/12) with labeling strips + keying elements
SV-DO232 B+C	00010868-50	Terminal set Phoenix screw frontside (3x SV 51/12) with labeling strips + keying elements
KZ-DOR206B+C	00014760-00	Terminal set Phoenix cage clamp (3x KZ 51/06) with labeling strips + keying elements
KS-GIO212 B+C	00023145-00	Terminal set cage clamp narrow (4x KS 35/15; 1 x KZ 51/02) with labeling strips + keying elements
SS-GM260 B	00023512-00	Terminal set Phoenix screw lateral (1x SS 76/11) with labeling strips
SS-GMP232 B+C ³⁾	00018860-00	Terminal set Phoenix cage clamp screw (1x KZ 51/03; 1x KZ 51/06; 2x SS76/06) with labeling strips + keying elements (up to KR 102.000)
SS-GMP232/x B	00027474-00	Terminal set Phoenix screw lateral (1x KZ 51/03; 1x KZ 51/06; 1x SS 76/06; 1x SS 76/06 inv.) with labeling strips (from KR 103.000)
KZ-GSP274 B	00023426-00	Terminal set Phoenix cage clamp/screw (1x KZ 51/03; 3x KZ 51/06; 2x SS76/10) with labeling strips
KZ-ISI222 B	00014277-30	Terminal set Phoenix cage clamp (1x KZ 51/02; 1x KZ 35/06; 1x KZ 35/07; 1x KZ 35/02) with labeling strips
KZ-ISI222 B+D	00014277-70	Terminal set Phoenix cage clamp (1x KZ 51/02; 1x KZ 35/06; 1x KZ 35/07; 1x KZ35/02) with labeling strips + D-sub connectors
KZ-PVA204 B	00028033-00	Terminal set Phoenix cage clamp (1x KZ 51/02; 1x KZ 35/08) with labeling strips (also for PVA202)
KZ-PVA208 B+C	00028032-00	Terminal set Phoenix cage clamp (1x KZ 51/02; 2x KZ 35/08) with labeling strips + keying elements
KS-PTAI216 B+C ⁴⁾	00012599-50	Terminal set cage clamp narrow (1x KZ 51/02; 4x KS 35/14) with labeling strips + keying elements → not for new developments
KZ-PTAI216 B+C	00026126-00	Terminal set Phoenix cage clamp (1x KZ 51/02; 4x KZ 35/14) with labeling strips + keying elements
SS-PTAI216 B+C	00012010-50	Terminal set Phoenix cage clamp (1x KZ 51/02; 4x SS 35/14) with labeling strips + keying elements
SV-PTAI216 B+C	00010870-50	Terminal set Phoenix (1x SV 51/02; 4x SS 35/14) with labeling strips + keying elements
KZ-SAI205 B+C	00031165-00	Terminal set Phoenix cage clamp (1x KZ 51/02; 2x KZ 35/20) with labeling strips + keying elements
KZ-SCT202 B+C	00027026-00	Terminal set Phoenix cage clamp (1x KZ 51/03; 2x KZ 35/07) with labeling strips + keying elements
KZ-SDI208 B+C	00014774-50	Terminal set Phoenix cage clamp (1x KZ 51/05; 2x KZ 35/12) with labeling strips + keying elements

³⁾ From KR 103.000 use the terminal set SS-GMP232/x B (00027474-00) (inverted current measurement point)

⁴⁾ Item will be discontinued and replaced by KZ-PTAI216 B+C (00026126-00)

Part type designation	Part number	Description
KZ-SDO204 B+C	00014772-50	Terminal set Phoenix cage clamp (1x KZ 51/05; 2x KZ 35/08) with labeling strips + keying elements
KZ-SLC284 B+C	00014771-50	Terminal set Phoenix cage clamp (1x KZ 51/05; 6x KZ 35/08) with labeling strips + keying elements
KZ-TCO204-C B+C	00012022-30	Terminal set Phoenix cage clamp (1x KZ 51/03; 1x KZ 51/13; 1x KZ 35/12) with labeling strips + keying elements
KZ-TCO216-C B+C	00012015-50	Terminal set Phoenix cage clamp (1x KZ 51/03; 2x KZ 51/13; 4x KZ 35/12) with labeling strips + keying elements
KS-TI214 B+C	00014432-50	Terminal set cage clamp narrow (1x KZ 51/02; 2x KS 35/16; 2x KS 35/12) with labeling strips + keying elements
SS-TI214 B+C	00014395-50	Terminal set Phoenix screw frontside (1x SS 51/02; 2x SS 35/16; 2x SS 35/12) with labeling strips + keying elements
KZ-VP200 B+C	00012017-50	Terminal set Phoenix cage clamp (2x KZ 51/16; 2x KZ 51/07) with labeling strips + keying elements
SS-GMP232/x B	00027474-00	Terminal set Phoenix screw lateral (1x KZ 51/03; 1x KZ 51/06; 1x SS 76/06; 1x SS 76/06 inv.) with labeling strips Voltage and current connectors, relay connectors as well as voltage supply connectors with screw-type terminals
SS-GMP232/x2	00037391-00	Terminal set Phoenix screw (1x SS 51/03; 1x SS 51/06; 1x SS 76/06 inv., 1x SS 76/07 reduced pins) with labeling strips Voltage and current connectors, relay connectors as well as voltage supply connectors with screw-type terminals
SS-GMP232/x2 KZ	00037392-00	Terminal set Phoenix screw (1x KZ 51/03; 1x KZ 51/06; 1x SS 76/06 inv.; 1x SS 76/07 reduced pins) with labeling strips Voltage and current connectors with screw-type terminals, relay connectors as well as voltage supply connectors with cage clamp terminal