

Example illustration: Terminals



Example illustration: Coding

Front Terminals and Terminal Sets

The standard connection technology for digital and analog signals of the M1 controller system is implemented with robust spring-loaded or screw terminals that can be fixed securely with a screw flange. Our product portfolio has the right connection to suit your requirements: Terminals with 3.5 mm pitch for analog signals or high density terminals for digital signals, and 5.08 mm pitch terminals for digital signals and power supply connections. Terminals with a 7.62 mm pitch are suitable for signals such as for grid measuring modules as they can meet particularly high requirements with regard to isolation.

The front terminals are compatible with the Phoenix Contact COMBICON® connection (5.08 and 7.62 pitch) or miniCOMBICON® (3.5 pitch).

The following features are provided depending on type:

- Terminals to a proven industrial standard
- Space saving pitch, depending on signal type
- Robust fixing via screw flange
- Coding of plug and terminal
- Different connection technologies possible (cage clamp, screw)
- Marking with stickers
- Measuring via test connection possible in part

Technical data of the individual terminals

The following terminal types are contained in terminal sets:

3.5 pitch, cage clamp terminals KZ 35/xx
--

3.5 pitch, small cage clamp terminals KS 35/xx, old type
--

3.5 pitch, small cage clamp terminals KS 35/xx, new type
--

5.08 pitch, cage clamp terminals KZ 51/xx

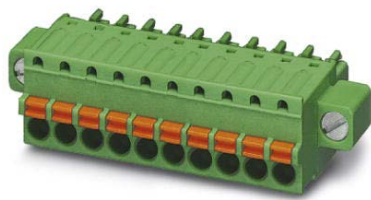
7.62 pitch, screw terminals SS 76/xx, side
--

7.62 pitch, screw terminals SS 76/xx, inverted
--

3.5 pitch, screw terminals SS 35/xx, side

3.5 pitch, screw terminals SS 51/xx, side

5.08 pitch, screw terminals SV 51/xx, front



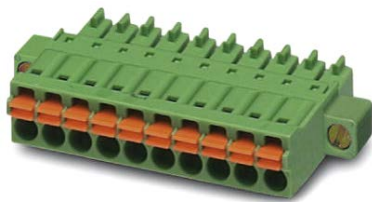
▼ Example illustration:

RM3.5 Pitch, Cage Clamp Terminals KZ 35/xx

Cage clamp terminals for rapid connection in push-in contacts with space saving 3.5 mm pitch. The front labeling facility and the test connection using a standard 1 mmØ test pin make this terminal ideally suited for analog signals and digital modules with a large number of channels. The screw flanges also ensure a secure mounting even in rugged environments.

KZ 35/xx	
General	
Pitch	3.5 mm
Numbers of pins	2, 3, 4, 5, 6, 7, 8, 10, 12, 16, 19
Rated current	Up to 8 A with 1.5 mm ²
Rated voltage	300 V acc. to UL / 160 V acc. to VDE
Rated voltage (III/2)	160 V
Color	Green
Contact surface	Tin, lead-free
Flammability class acc. to UL94	V0
Fixing	Side screw flange M2.5
Labelling	On front with stickers
Conductors	
Conductor cross-section rigid min.	0.14 mm ²
Conductor cross-section rigid max.	1.5 mm ²
Conductor cross-section flexible min.	0.14 mm ²
Conductor cross-section flexible max.	1.5 mm ²
Conductor cross-section, ferrule with collar min.	0.25 mm ²
Conductor cross-section, ferrule with collar max.	0.5 mm ²
AWG acc. to UL/cUL min.	28
AWG acc. to UL/cUL max.	16
Ferrules	Acc. to DIN 46228-4 with insulation collar Cross section: 0.14 mm ² ; Length: 8 mm Cross section: 0.34 mm ² ; Length: 8 to 10 mm Cross section: 0.5 mm ² ; Length: 8 to 10 mm Cross section: 0.75 mm ² ; Length 8 to 10 mm
Stripping length and pin length	8 mm

KZ 35/xx	
Tools	
Screw flange	Screwdriver, blade width ≤ 2.5 mm, thickness ≤ 0.4 mm
Screw flange Torque max.	0.3 Nm
Spring contact actuator	Screwdriver, blade width ≤ 2.5 mm, thickness ≤ 0.4 mm
Test connection	1 mmØ test pin
Coding	
Coding	By removing the coding pins on the contact and corresponding coding element in the pin housing of the module. For details see the section »Coding«
Approvals	
UL / cUL	cULus Recognized, VDE
Manufacturer	
Phoenix Contact	FK-MCP 1,5/...-STF-3,5 (.. =Number of poles, two-digit)



Example illustration:

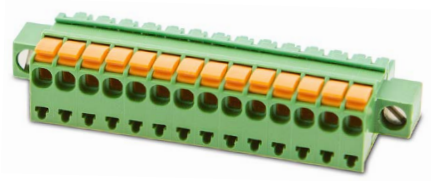
**RM3.5 Pitch, Small Cage Clamp Terminals
KS 35/xx, Old Type**

Narrow design cage clamp terminals for rapid connection in push-in contacts with space saving 3.5 mm pitch. This terminal is ideally suited for analog signals with a test connection using a standard 1 mmØ test pin. The screw flanges also ensure a secure mounting even in rugged environments.

The mounting form shown here is replaced by the new mounting form because the new design allows labelling on the front.

KS 35/xx	
General	
Pitch	3.5 mm
Numbers of pins	3, 4, 6, 12, 15, 16, 19, 20
Rated current	Up to 8 A with 1.5 mm²
Rated voltage	150 V acc. to UL / 160 V acc. to VDE
Rated voltage (III/2)	160 V
Color	Green
Contact surface	Tin, lead-free
Flammability class acc. to UL94	V0
Fixing	Side screw flange M2.5
Labelling	On side with stickers
Conductors	
Conductor cross-section rigid min.	0.2 mm²
Conductor cross-section rigid max.	1.5 mm²
Conductor cross-section flexible min.	0.2 mm²
Conductor cross-section flexible max.	1.5 mm²
Conductor cross-section, ferrule with collar min.	0.25 mm²
Conductor cross-section, ferrule with collar max.	0.75 mm²
AWG acc. to UL/cUL min.	24
AWG acc. to UL/cUL max.	16
Ferrules	Acc. to DIN 46228-4 with insulation collar Cross section: 0.25 mm²; Length: 8 mm Cross section: 0.34 mm²; Length: 8 to 10 mm Cross section: 0.5 mm²; Length: 8 to 10 mm Cross section: 0.75 mm²; Length 8 to 10 mm
Stripping length and pin length	8 mm

KS 35/xx	
Tools	
Screw flange	Screwdriver, blade width ≤ 2.5 mm, thickness ≤ 0.4 mm
Screw flange Torque max.	0.3 Nm
Spring contact actuator	Screwdriver, blade width ≤ 2.5 mm, thickness ≤ 0.4 mm
Test connection	1 mmØ test pin
Coding	
Coding	By removing the coding pins on the contact and corresponding coding element in the pin housing of the module. For details see the section »Coding«
Approvals	
UL / cUL	cULus Recognized, VDE
Manufacturer	
Phoenix Contact	FMC 1,5/..-STF-3,5 (.. =Number of poles, two-digit)



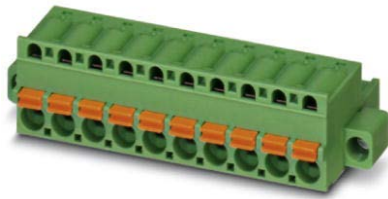
▼ Example illustration:

RM3.5 Pitch, Small Cage Clamp Terminals KS 35/xx, New Type

Narrow design cage clamp terminals for rapid connection in push-in terminals with space saving 3.5 mm pitch. The front labelling feature and the test connection using a standard 1 mmØ test pin makes this terminal ideally suited for analog signals. The screw flanges also ensure a secure mounting even in rugged environments.

KS 35/xx	
General	
Pitch	3.5 mm
Numbers of pins	3, 4, 6, 12, 15, 16, 19, 20
Rated current	Up to 8 A with 1.5 mm ²
Rated voltage	300 V acc. to UL / 130 V acc. to VDE
Rated voltage (III/2)	130 V (UL 300 V)
Color	Green
Contact surface	Tin, lead-free
Flammability class acc. to UL94	V0
Fixing	Side screw flange M2.5
Labelling	On front with stickers
Conductors	
Conductor cross-section rigid min.	0.14 mm ²
Conductor cross-section rigid max.	1.5 mm ²
Conductor cross-section flexible min.	0.14 mm ²
Conductor cross-section flexible max.	1.0 mm ²
Conductor cross-section, ferrule with collar min.	0.25 mm ²
Conductor cross-section, ferrule with collar max.	0.75 mm ²
AWG acc. to UL/cUL min.	24
AWG acc. to UL/cUL max.	16
Ferrules	Acc. to DIN 46228 T1 / max. 1.5 mm ² Acc. to DIN 46228 T4 / max. 1 mm ²
Stripping length and pin length	Min. 8 to 11.5 mm
Tools	
Screw flange	Screwdriver, blade width ≤ 3.75 mm, thickness ≤ 0.7 mm
Screw flange Torque max.	0.2 Nm
Spring contact actuator	Screwdriver blade width ≤ 2.75 mm
Test connection	1 mmØ test pin

KS 35/xx	
Coding	
Coding	Coding element »CKF« is inserted on the contact and matches the unmounted coding element in the pin housing of the module. For details see the section »Coding«
Approvals	
UL / cUL	cULus Recognized, VDE
Manufacturer	
SAURO	CBF..0D8-0M (.. =Number of poles, two-digit)



▼ Example illustration:

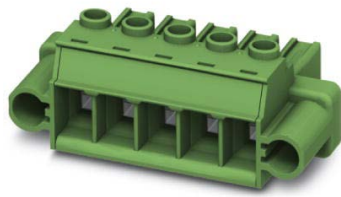
RM3.5 Pitch, Cage Clamp Terminals KZ 51/xx

Cage clamp terminals for rapid connection in push-in contacts with a 5.08 mm pitch.

For larger cross-sections up to 2.5 mm² with front labelling and the test connection using a standard 1 mmØ test pin, this terminal is ideally suited for digital signals. The screw flanges also ensure a secure mounting even in rugged environments.

KZ 51/xx	
General	
Pitch	5.08 mm
Numbers of pins	2, 3, 5, 6, 7, 10, 12, 13, 16
Rated current	Up to 10 A with 2.5 mm ²
Rated voltage	250 V
Rated voltage (III/2)	320 V
Color	Green
Contact surface	Tin, lead-free
Flammability class acc. to UL94	V0
Fixing	Side screw flange M2.5
Labelling	On front with stickers
Conductors	
Conductor cross-section rigid min.	0.2 mm ²
Conductor cross-section rigid max.	2.5 mm ²
Conductor cross-section flexible min.	0.25 mm ²
Conductor cross-section flexible max.	2.5 mm ²
Conductor cross-section, ferrule with collar min.	0.25 mm ²
Conductor cross-section, ferrule with collar max.	2.5 mm ²
AWG acc. to UL/cUL min.	26
AWG acc. to UL/cUL max.	12
Ferrules	Acc. to DIN 46228 T1 or T4, Form A
Stripping length and pin length	8 mm
Tools	
Screw flange	Screwdriver, blade width ≤ 3.5 mm, thickness ≤ 0.6 mm
Screw flange Torque max.	0.3 Nm
Spring contact actuator	Screwdriver, blade width ≤ 3.5 mm, thickness ≤ 0.6 mm
Test connection	2 mmØ test pin and 2.3 mmØ test pin

KZ 51/xx	
Coding	
Coding	Coding element »CP-MSTB« is inserted on the contact and matches the unmounted coding element in the pin housing of the module. For details see the section »Coding«
Approvals	
UL / cUL	cULus Recognized, VDE
Manufacturer	
Phoenix Contact	FKC 2,5/..-STF-5,08 (.. =Number of poles, two-digit)



▼ Example illustration:

RM7.62 Pitch Cage Clamp Terminals SS 76/xx, Side

Screw terminal is also designed for the safe connection of large cross-sections up to 6 mm² and corresponding voltage resistance up to 600 V of network measuring modules. Front labelling feature and with screw flanges also ensure a secure mounting even in rugged environments.

SS 76/xx

General

Pitch	7.62 mm
Numbers of pins	6, 10, 11
Rated current	Up to 41 A with 6 mm ²
Rated voltage	600 V
Rated voltage (III/2)	1000 V
Color	Green
Contact surface	Tin, lead-free
Flammability class acc. to UL94	V0
Fixing	Side screw flange M3
Labelling	On front with stickers

Conductors

Conductor cross-section rigid min.	0.2 mm ²
Conductor cross-section rigid max.	10 mm ²
Conductor cross-section flexible min.	0.20 mm ²
Conductor cross-section flexible max.	6 mm ²
Conductor cross-section, ferrule with collar min.	0.25 mm ²
Conductor cross-section, ferrule with collar max.	4 mm ²
AWG acc. to UL/cUL min.	24
AWG acc. to UL/cUL max.	8
Ferrules	Acc. to DIN 46228 T1 or T4, Form A
Stripping length and pin length	8 mm

Tools

Screw connection	Screwdriver, blade width ≤ 3.5 mm, thickness ≤ 0.6 mm
Screw terminal torque	0.7 to 0.8 Nm
Screw flange	Screwdriver, blade width ≤ 3.5 mm, thickness ≤ 0.6 mm
Screw flange Torque max.	0.7 Nm
Test connection	No

SS 76/xx**Coding**

Coding	Coding element »CP-PC-RD« is inserted on the contact and matches the unmounted coding element in the pin housing of the module. For details see the section »Coding«
--------	--

Approvals

UL / cUL	cULus Recognized, VDE
----------	-----------------------

Manufacturer

Phoenix Contact	PC 5/ ...STF1-7,62 (.. =Number of poles, two-digit)
-----------------	---



Example illustration:

RM7.62 Pitch Cage Clamp Terminals SS 76/xx, Inverted

Screw terminal with inverted face for reliable mechanical reverse polarity protection in comparison to SS 76/xx. The SS 76/xx inverted is also designed for the safe connection of large cross-sections up to 6 mm² and corresponding voltage resistance up to 600 V of network measuring modules. Front labelling feature and with screw flanges also ensure a secure mounting even in rugged environments.

SS 76/xx Inverted

General	
Pitch	7.62 mm
Numbers of pins	6, 10, 11
Rated current	Up to 41 A with 6 mm ²
Rated voltage	600 V
Rated voltage (III/2)	1000 V
Color	Green
Contact surface	Tin, lead-free
Flammability class acc. to UL94	V0
Fixing	Side screw flange M3
Labelling	On front with stickers
Conductors	
Conductor cross-section rigid min.	0.2 mm ²
Conductor cross-section rigid max.	10 mm ²
Conductor cross-section flexible min.	0.20 mm ²
Conductor cross-section flexible max.	6 mm ²
Conductor cross-section, ferrule with collar min.	0.25 mm ²
Conductor cross-section, ferrule with collar max.	4 mm ²
AWG acc. to UL/cUL min.	24
AWG acc. to UL/cUL max.	8
Ferrules	Acc. to DIN 46228 T1 or T4, Form A
Stripping length and pin length	8 mm
Tools	
Screw connection	Screwdriver, blade width ≤ 3.5 mm, thickness ≤ 0.6 mm
Screw terminal torque	0.7 to 0.8 Nm
Screw flange	Screwdriver, blade width ≤ 3.5 mm, thickness ≤ 0.6 mm
Screw flange Torque max.	0.7 Nm
Test connection	No

SS 76/xx Inverted**Coding**

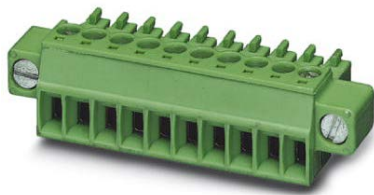
Coding	Coding element »CP-PC-RD« is inserted on the contact and matches the unmounted coding element in the pin housing of the module. For details see the section »Coding«
--------	--

Approvals

UL / cUL	cULus Recognized
----------	------------------

Manufacturer

Phoenix Contact	IPC 5/ ..-STF-7,62 (.. =Number of poles, two-digit)
-----------------	---



▼ Example illustration:

RM3.5 Pitch, Cage Clamp Terminals SS 35/xx, Side

Screw terminal for the safe connection in 3.5 mm pitch for finer wires up to max. 1.5 mm², as used for analog signals or compact digital modules. The terminals can be labeled on the front. The screw flanges also ensure a secure mounting even in rugged environments.

SS 35/xx

General

Pitch	3.5 mm
Numbers of pins	2, 3, 4, 6, 7, 14, 16, 19
Rated current	Up to 8 A with 1.5 mm ²
Rated voltage	160 V
Rated voltage (III/2)	160 V
Color	Green
Contact surface	Tin, lead-free
Flammability class acc. to UL94	V0
Fixing	Side screw flange M2.5
Labelling	On front with stickers

Conductors

Conductor cross-section rigid min.	0.14 mm ²
Conductor cross-section rigid max.	1.5 mm ²
Conductor cross-section flexible min.	0.14 mm ²
Conductor cross-section flexible max.	1.5 mm ²
Conductor cross-section, ferrule with collar min.	0.25 mm ²
Conductor cross-section, ferrule with collar max.	0.5 mm ²
AWG acc. to UL/cUL min.	28
AWG acc. to UL/cUL max.	16
Ferrules	Acc. to DIN 46228 T1 or T4, Form A
Stripping length and pin length	8 mm

Tools

Screw connection	Screwdriver, blade width ≤ 2.5 mm, thickness ≤ 0.4 mm
Screw terminal torque	0.22 to 0.25 Nm
Screw flange	Screwdriver, blade width ≤ 2.5 mm, thickness ≤ 0.4 mm
Screw flange Torque max.	0.3 Nm
Test connection	No

SS 35/xx	
Coding	
Coding	By removing the coding pins on the contact and corresponding coding element in the pin housing of the module. For details see the section »Coding«
Approvals	
UL / cUL	cULus Recognized, VDE
Manufacturer	
Phoenix Contact	MC 1,5/...-STF-3,5 (.. =Number of poles, two-digit)



▼ Example illustration:

RM5.08 Pitch, Cage Clamp Terminals SS 51/xx, Side

Screw terminal for the safe connection in 5.08 mm pitch and for larger cross-sections up to 2.5 mm² for digital signals. The terminals can be labeled on the front. The screw flanges also ensure a secure mounting even in rugged environments.

SS 51/xx	
General	
Pitch	5.08 mm
Numbers of pins	2, 3, 5, 6, 7, 8, 10, 12, 13, 16
Rated current	Up to 12 A with 2.5 mm ²
Rated voltage	250 V
Rated voltage (III/2)	320 V
Color	Green
Contact surface	Tin, lead-free
Flammability class acc. to UL94	V0
Fixing	Side screw flange M2.5
Labelling	On front with stickers
Conductors	
Conductor cross-section rigid min.	0.2 mm ²
Conductor cross-section rigid max.	2.5 mm ²
Conductor cross-section flexible min.	0.25 mm ²
Conductor cross-section flexible max.	2.5 mm ²
Conductor cross-section, ferrule with collar min.	0.25 mm ²
Conductor cross-section, ferrule with collar max.	2.5 mm ²
AWG acc. to UL/cUL min.	30
AWG acc. to UL/cUL max.	12
Ferrules	Acc. to DIN 46228 T1 or T4, Form A
Stripping length and pin length	8 mm
Tools	
Screw connection	Screwdriver, blade width ≤ 3.5 mm, thickness ≤ 0.6 mm
Screw terminal torque	0.5 to 0.6 Nm
Screw flange	Screwdriver, blade width ≤ 3.5 mm, thickness ≤ 0.6 mm
Screw flange Torque max.	0.3 Nm
Test connection	No

SS 51/xx	
Coding	
Coding	Coding element »CP-MSTB« is inserted on the contact and matches the unmounted coding element in the pin housing of the module. For details see the section »Coding«
Approvals	
UL / cUL	cULus Recognized, VDE
Manufacturer	
Phoenix Contact	MSTB 2,5/..-STF (.. =Number of poles, two-digit)



▼ Example illustration:

RM5.08 Pitch, Screw Terminals SV 51/xx, Front





Screw terminals with screws on front enable convenient mounting and safe connection in 5.08 mm pitch for larger cross-sections up to 2.5 mm² for digital signals. The signals can be measured easily via the front screws. The screw flanges also ensure a secure mounting even in rugged environments.

SV 51/xx	
General	
Pitch	5.08 mm
Numbers of pins	2, 3, 7, 16
Rated current	Up to 12 A with 2.5 mm ²
Rated voltage	250 V
Rated voltage (III/2)	320 V
Color	Green
Contact surface	Tin, lead-free
Flammability class acc. to UL94	V0
Fixing	Side screw flange M2.5
Labelling	On side with stickers
Conductors	
Conductor cross-section rigid min.	0.2 mm ²
Conductor cross-section rigid max.	2.5 mm ²
Conductor cross-section flexible min.	0.25 mm ²
Conductor cross-section flexible max.	2.5 mm ²
Conductor cross-section, ferrule with collar min.	0.25 mm ²
Conductor cross-section, ferrule with collar max.	2.5 mm ²
AWG acc. to UL/cUL min.	24
AWG acc. to UL/cUL max.	12
Ferrules	Acc. to DIN 46228 T1 or T4, Form A
Stripping length and pin length	8 mm
Tools	
Screw connection	Screwdriver, blade width ≤ 3.5 mm, thickness ≤ 0.6 mm
Screw terminal torque	0.5 to 0.6 Nm
Screw flange	Screwdriver, blade width ≤ 3.5 mm, thickness ≤ 0.6 mm
Screw flange Torque max.	0.3 Nm
Test connection	No (can only be tapped via screw head)

SV 51/xx	
Coding	
Coding	Coding element »CP-MSTB« is inserted on the contact and matches the unmounted coding element in the pin housing of the module. For details see the section »Coding«
Approvals	
UL / cUL	cULus Recognized, VDE
Manufacturer	
Phoenix Contact	FRONT-MSTB 2,5/..-STF (.. =Number of poles, two-digit)

Coding

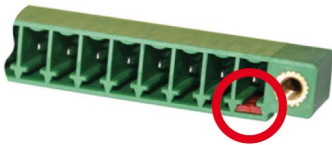
If several jacks of the same type and with the same number of pins are used for a module, the jack coding can prevent a jack from being plugged into the incorrect socket. For this, the jacks/sockets must be equipped with coding elements.

Coding elements (Overview)			
Plug-in coding element	Clip-on coding element		Coding element for R = 7.62 socket and pin header (SS 76)
	for R = 3.5 socket	for R = 5.08 pin header	
CP-MSTB	CKF-SC1	CR-MSTB	CP-HCC 4
			

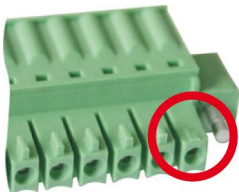
Coding 3.5 pitch plug connectors

Procedure:

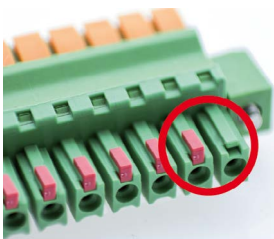
1. Insert plug-in coding element into socket.



2. Code the associated jack.
On the corresponding pin of the jack:
 - If connector type 1, remove coding pin.
This applies to all plug connectors with a 3.5 mm pitch except the 3.5 pitch cage clamp terminals, narrow / KS 35/xx new type.



- With the 3.5 pitch cage clamp terminals, narrow / KS 35/xx new type the CKF-SC1 coding element must be fitted.

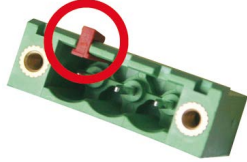


→ This way, this jack will only fit in this socket.

Coding 5.08 pitch plug connectors

Procedure:

1. Insert clip-on coding element into pin header.



2. Insert plug-in coding element into socket on the pins on which there is no coding element in the pin header.

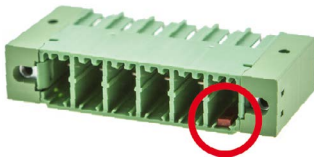


→ This way, this jack will only fit in this socket.

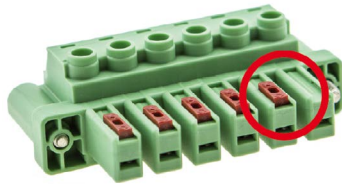
Coding 7.62 pitch plug connectors (SS 76)

Procedure:

1. Fitting the CP-HCC4 coding element in the socket.



2. The same CP-HCC4 coding element is fitted on the plug connector.



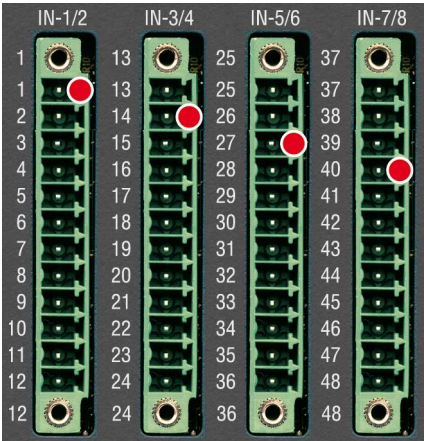
→ This way, this jack will only fit in this socket.

Positioning

Positioning of the coding element depends on the number of pins and the number of jacks.

Number of Pins > Number of jack

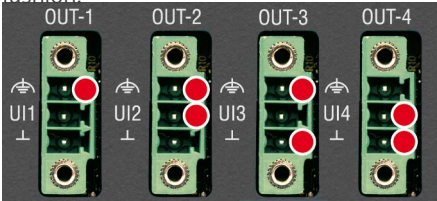
If the number of pins is greater than the number of the same jack, it is sufficient when one coding element is plugged in per socket:



Positioning - number of pins > number of jacks

Number of Pins < Number of jack

If the number of pins is smaller than the number of the same jack, then coding must occur in binary fashion:



Positioning - number of pins < number of jacks

Terminal Sets Overview		
Item	Item no.	Description
KZ 51/02 B	00012058-00	Terminal 02-pins pitch 5.08; cage clamp terminal with labeling strips
KZ 51/03 B	00012052-00	Terminal 03-pins pitch 5.08; cage clamp terminal with labeling strips
KZ 51/03 B+C	00012052-50	Terminal 03-pins grid 5.08; cage clamp terminal with labeling strips and coding elements for NT250/48
KZ 51/05 B	00013391-00	Terminal 05-pins pitch 5.08; cage clamp terminal with labeling strips
KZ-ACR222 B	00012056-30	Terminal set Phoenix cage clamp (1x KZ 51/02; 1x KZ 35/10) with labeling strips
SS-AI202/SI B+C	00012354-50	Terminal set Phoenix screw side (2x SS 35/03) with labeling strips and coding elements
KS-(AI204/SI //AO204/SI) B+C	00024539-00	Terminal set cage clamp small (4x KS 35/03) with labeling strips and coding elements
SS-AI204/SI B+C	00012353-50	Terminal set Phoenix screw side (4x SS 35/03) with labeling strips and coding elements
KZ-AI204/1 B	00012053-30	Terminal set Phoenix cage clamp small (1x KZ 35/04) with labeling strips
KS-AI204/2 B+C	00013155-50	Terminal set cage clamp small (2x KS 35/04) with labeling strips and coding elements
SS-AI204/2 B+C	00011979-50	Terminal set Phoenix screw side (2x SS 35/04) with labeling strips and coding elements
KS-AI204/4 B+C	00013156-50	Terminal set Phoenix cage clamp small (4x KS 35/04) with labeling strips and coding elements
SS-AI204/4 B+C	00012008-50	Terminal set Phoenix screw side (4x SS 35/04) with labeling strips and coding elements
KZ-AI208/SI B+C ¹⁾	00019091-00	Terminal set Phoenix cage clamp (8x KZ 35/03) with labeling strips and coding elements → not for new developments
KS-AI208/SI B+C	00027409-00	Terminal set cage clamp small (8x KS 35/03) with labeling strips and coding elements
SS-AI208/SI B+C	00019866-00	Terminal set Phoenix screw side (8x SS 35/03) with labeling strips and coding elements
KZ-AIC206 B+C	00031409-00	Terminal set Phoenix cage clamp (1x KZ 51/02; 2x KZ 35/12) with labelling strips and coding elements
KZ-AIC212 B+C	00014396-50	Terminal set Phoenix cage clamp (1x KZ 51/02; 4x KZ 35/12) with labeling strips and coding elements
KZ-AIC214 B+C	00031066-00	Terminal set Phoenix cage clamp (1x KZ 51/02; 3x KZ 35/12; 1x KZ 35/15) with labelling strips and coding elements
KZ-AIO202/SI B+C	00024831-00	Terminal set Phoenix cage clamp (2x KZ 35/05) with labeling strips
KZ-AIO204/SI B+C	00024832-00	Terminal set Phoenix cage clamp (4x KZ 35/05) with labeling strips
KZ-AIO208/SI B+C	00025859-00	Terminal set Phoenix cage clamp (8x KZ 35/05) with labeling strips
KS-AIO208 B+C	00023149-00	Terminal set cage clamp small (2x KS 35/20; 1 x KZ 51/02) with labeling strips and coding elements
KS-AIO216 B+C	00023148-00	Terminal set cage clamp small (4x KS 35/20; 1 x KZ 51/02) with labeling strips and coding elements
KS-AIO288 B+C ²⁾	00012598-50	Terminal set cage clamp small (4x KS 35/19; 1x KZ 51/03) with labeling strips and coding elements → not for new developments
KZ-AIO288 B+C	00026125-00	Terminal set Phoenix cage clamp small (4x KZ 35/19; 1x KZ 51/03) with labeling strips and coding elements
SS-AIO288 B+C	00012007-50	Terminal set Phoenix screw side (4x SS 35/19; 1x KZ 51/03) with labeling strips and coding elements
SV-AIO288 B+C	00010864-50	Terminal set Phoenix screw (4x SS 35/19; 1x SV 51/03) with labeling strips and coding elements

1) Article will be discontinued and replaced by KS-AI208/SI B+C (00027409-00)

2) Article will be discontinued and replaced by KZ-AIO288 B+C (00026125-00)

Terminal Sets Overview		
Item	Item no.	Description
KZ-AO202 B+C	00011980-50	Terminal set Phoenix cage clamp (2x KZ 35/04) with labeling strips and coding elements
SS-AO202/SI B+C	00012378-50	Terminal set Phoenix screw side (2x SS 35/03) with labeling strips and coding elements
KS-(AI204/SI //AO204/SI) B+C	00024539-00	Terminal set cage clamp small (4x KS 35/03) with labeling strip and coding elements
SS-AO204/SI B+C	00012379-50	Terminal set Phoenix screw side (4x SS 35/03) with labeling strips and coding elements
KS-AO208/I B+C	00012948-50	Terminal set cage clamp small (4x KS 35/06; 1x KZ 51/02) with labeling strips and coding elements
SS-AO208/I B+C	00012009-50	Terminal set Phoenix screw side (4x SS 35/06; 1x KZ 51/02) with labeling strips and coding elements
KZ-CNT204 B	00012057-30	Terminal set Phoenix cage clamp (1x KZ 51/02; 1x KZ 51/12) with labeling strips
SV-CNT204 B	00010869-50	Terminal set Phoenix screw front (1x SV 51/02; 1x SV 51/12) with labeling strips
KZ-CPC210 B+C+D	00023591-00	Terminal set Phoenix cage clamp (1x KZ 51/03; 3x KS 35/16; 3x KS 35/20) with labeling strips + coding elements + DSUB-Connector
KZ-DA2384-C B+C	00013832-50	Terminal set Phoenix cage clamp (8x KZ 51/12; 1x KZ 51/07; 4x KZ 35/12; 4x KZ 35/03) with labeling strips and coding elements
KZ-DI216 B+C	00011973-50	Terminal set Phoenix cage clamp (3x KZ 51/10) with labeling strips and coding elements
SV-DI216 B+C	00010866-50	Terminal set Phoenix screw frontside (2x SV 51/10) with labeling strips and coding elements
KZ-DI232 B+C	00012004-50	Terminal set Phoenix cage clamp (3x KZ 51/12) with labeling strips and coding elements
SV-DI232 B+C	00010867-50	Terminal set Phoenix screw frontside (2x SV 51/12) with labeling strips and coding elements
KZ-DIO16-C B+C	00012011-50	Terminal set Phoenix cage clamp (1x KZ 51/07; 4x KZ 51/12) with labeling strips and coding elements
KZ-DIO32-C B+C	00012012-50	Terminal set Phoenix cage clamp (1x KZ 51/07; 8x KZ 51/12) with labeling strips and coding elements
KZ-DIO48-C B+C	00012013-50	Terminal set Phoenix cage clamp (1x KZ 51/07; 12x KZ 51/12) with labeling strips and coding elements
KZ-DIO264-C B+C	00012014-50	Terminal set Phoenix cage clamp (1x KZ 51/03; 6x KZ 51/12) with labeling strips and coding elements
KZ-DIO216 B+C	00011974-50	Terminal set Phoenix cage clamp (3x KZ 51/12; 1x KZ 51/02) with labeling strips and coding elements
SV-DIO216 B+C	00012078-50	Terminal set Phoenix screw frontside (3x SV 51/12; 1x SV 51/02) with labeling strips and coding elements
KZ-DIO216/4 B+C	00011975-50	Terminal set Phoenix cage clamp (3x KZ 51/12; 1x KZ 51/02) with labeling strips and coding elements
KZ-DIO232 B+C	00013742-50	Terminal set Phoenix cage clamp (3x KZ 51/12) with labeling strips and coding elements
SS-DIO232 B+C	00015816-00	Terminal set Phoenix screw frontside (3x SS 51/12) with labeling strips and coding elements
KZ-DIO248 B+C	00011976-50	Terminal set Phoenix cage clamp (4x KZ 35/16) with labeling strips and coding elements
SS-DIO248 B+C	00012539-50	Terminal set Phoenix screw side (4x SS 35/16) with labeling strips and coding elements

Terminal Sets Overview		
Item	Item no.	Description
KZ-DIO264 B+C	00011977-50	Terminal set Phoenix cage clamp (5x KZ 35/16) with labeling strips and coding elements
KZ-DIO280 B+C	00011978-50	Terminal set Phoenix cage clamp (6x KZ 35/16) with labeling strips and coding elements
SS-DIO280 B+C	00012538-50	Terminal set Phoenix screw side (6x SS 35/16) with labeling strips and coding elements
KZ-DMS202 B	00012054-30	Terminal set Phoenix cage clamp (1x KZ 51/02; 1x KZ 35/03) with labeling strips
KZ-DO216 B+C	00012005-50	Terminal set Phoenix cage clamp (3x KZ 51/10) with labeling strips and coding elements
SV-DO216 B+C	00010865-50	Terminal set Phoenix screw frontside (2x SV 51/10) with labeling strips and coding elements
KZ-DO232 B+C	00012006-50	Terminal set Phoenix cage clamp (3x KZ 51/12) with labeling strips and coding elements
SV-DO232 B+C	00010868-50	Terminal set Phoenix screw frontside (2x SV 51/12) with labeling strips and coding elements
KZ-DOR206 B+C	00014760-00	Terminal set Phoenix cage clamp (3x KZ 51/06) with labeling strips and coding elements
KS-GIO212 B+C	00023145-00	Terminal set cage clamp small (4 x KS 35/15; 1 x KZ 51/02) with labeling strip and coding elements
SS-GM260 B	00023512-00	Terminal set Phoenix screw side (1x SS 76/11) with labeling strips
SS-GMP232 B+C ¹⁾	00018860-00	Terminal set Phoenix cage clamp/screw (1x KZ 51/03; 1x KZ 51/06; 2x SS76/06) with labeling strips and coding elements (up to KR 102.000)
SS-GMP232/x B	00027474-00	Terminal set Phoenix screw side (1x KZ 51/03; 1x KZ 51/06; 1x SS 76/06; 1x SS 76/06 inv) with labeling strips (from KR 103.000)
KZ-GSP274 B	00023426-00	Terminal set Phoenix cage clamp/screw (1x KZ 51/03; 3x KZ 51/06; 2x SS76/10) with labeling strips
KZ-ISI222 B	00014277-30	Terminal set Phoenix cage clamp (1x KZ 51/02; 1x KZ 35/06; 1x KZ 35/07; 1x KZ 35/02) with labeling strips
KZ-ISI222 B+D	00014277-70	Terminal set Phoenix cage clamp (1x KZ 51/02; 1x KZ 35/06; 1x KZ 35/07; 1x KZ 35/02) with labeling strips + DSUB-Connector
KZ-PVA204 B	00028033-00	Terminal set Phoenix cage clamp (1x KZ 51/02; 1x KZ 35/08) with labeling strips (also for PVA202)
KZ-PVA208 B+C	00028032-00	Terminal set Phoenix cage clamp (1x KZ 51/02; 2x KZ 35/08) with labeling strips and coding elements
KS-PTAI216 B+C ²⁾	00012599-50	Terminal set cage clamp small (1x KZ 51/02; 4x KS 35/14) with labeling strips and coding elements → not for new developments
KZ-PTAI216 B+C	00026126-00	Terminal set Phoenix cage clamp small (1x KZ 51/02; 4x KZ 35/14) with labeling strips and coding elements
SS-PTAI216 B+C	00012010-50	Terminal set Phoenix screw side (1x KZ 51/02; 4x SS 35/14) with labeling strips and coding elements
SV-PTAI216 B+C	00010870-50	Terminal set Phoenix screw frontside (1x SV 51/02; 4x SS 35/14) with labeling strips and coding elements
KZ-SAI205 B+C	00031165-00	Terminal set Phoenix cage clamp (1x KZ 51/02; 2x KZ 35/20) with labeling strips and coding elements
KZ-SCT202 B+C	00027026-00	Terminal set Phoenix cage clamp (1x KZ 51/03; 2x KZ 35/07) with labeling strips and coding elements
KZ-SDI208 B+C	00014774-50	Terminal set Phoenix cage clamp (1x KZ 51/05; 2x KZ 35/12) with labeling strips and coding elements

1) From KR 103.000 use the terminal set SS-GMP232/x B (00027474-00) (inverted current measurement point)

2) Article will be discontinued and replaced by KZ-PTAI216 B+C (00026126-00)

Terminal Sets Overview		
Item	Item no.	Description
KZ-SDO204 B+C	00014772-50	Terminal set Phoenix cage clamp (1x KZ 51/05; 2x KZ 35/08) with labeling strips and coding elements
KZ-SLC284 B+C	00014771-50	Terminal set Phoenix cage clamp (1x KZ 51/05; 6x KZ 35/08) with labeling strips and coding elements
KZ-TCO204-C B+C	00012022-30	Terminal set Phoenix cage clamp (1x KZ 51/03; 1x KZ 51/13; 1x KZ 35/12) with labeling strips and coding elements
KZ-TCO216-C B+C	00012015-50	Terminal set Phoenix cage clamp (1x KZ 51/03; 2x KZ 51/13; 4x KZ 35/12) with labeling strips and coding elements
KS-TI214 B+C	00014432-50	Terminal set cage clamp small (1x KZ 51/02; 2x KS 35/16; 2x KS 35/12) with labeling strips and coding elements
SS-TI214 B+C	00014395-50	Terminal set Phoenix screw side (1x SS 51/02; 2x SS 35/16; 2x SS 35/12) with labeling strips and coding elements
KZ-VP200 B+C	00012017-50	Terminal set Phoenix cage clamp (2x KZ 51/16; 2x KZ 51/07) with labeling strips and coding elements