

Complete retrofit solution for turbines

HIGHER YIELDS FROM THE OFFSET



You will find this and other interesting articles in our customer magazine

real.times

bachmann.info/download-center



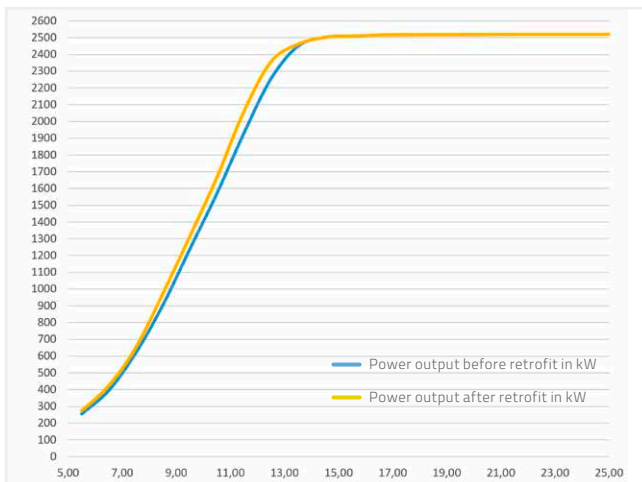
Often seen in the USA: Clipper plants. If, as in this case, spare parts are no longer available, then a control system retrofit extends service life and ensures necessary security levels.

Complete retrofit solution for turbines

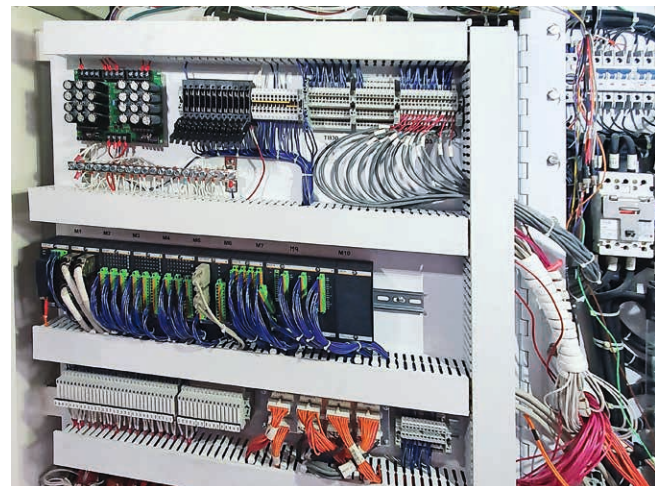
HIGHER YIELDS FROM THE OFFSET

3 days. This is the longest it takes to equip wind turbines for the future. The retrofitting of almost sixty Clipper Liberty 2.5 wind turbines with Bachmann's complete retrofit solution demonstrates just how quickly operators can increase yields while extending the service life of their plants.

The operation of older wind turbines (WTGs) is complex and expensive: failures increase and spare parts may no longer be available. System access and parameterization options are limited, as is adapting software to different types of spare parts, such as sensors. Optimizing operations is difficult, resulting in rising operating costs and declining revenues. Bachmann's complete retrofit solution is the answer.



3% more yield: The intelligent control algorithms behind the retrofit solution take the current condition of rotor blades into account. This increases the tip speed ratio (TSR). The result: up to 3% increase in annual energy production.



Moving into the future with ease: Thanks to the fully prepared, 1x1 m "swing panels", the retrofit solution is installed in no time at all. This ensures a safe, reproducible rollout of all systems.

Extended lifetime

Bachmann equipped 58 2.5 MW Clipper plants with a new, modular turbine controller. The turbines themselves are state-of-the-art but spare parts are no longer available due to manufacturer insolvency. The new control system facilitates longer service life. At the same time, spare part availability is secured for years to come. In addition, the solution enables the adjustment of turbine parameters, for example to reduce load on the turbine as it ages.

Higher transparency, lower downtime

The software has also been updated to the latest technology: M1 WebMI pro provides efficient, on-site turbine visualizations via any web browser, and Wind Power SCADA allows remote web-based turbine control and monitoring. Speed, pitch and power setpoint can be easily adjusted according to current wind loads and matched with grid capacity via the Smart Power Plant Controller. Furthermore, the wind tracking system and rotor brake can be manually controlled. Remote reset and self-start routines automatically restart turbine operations following any malfunctions.

Manageable maintenance

A fully integrated Condition Monitoring System for the entire drivetrain improves predictions about future turbine condition and optimizes O&M strategies. Visits to the site are thereby reduced. Transparent engineering tools improve efficiency during maintenance.

Rapid implementation

Installation and commissioning of the Clipper retrofits was completed in less than 72 hours. The pre-prepared control cabinet panels are partly to thank, facilitating a simple plug-and-play installation. This ensures a secure rollout of all turbines that can be implemented with minimal downtime.

Bachmann's intelligent installation app supports the install team with a quick, reliable implementation. Technicians are guided step by step through the installation and commissioning process, at the same time documenting their progress and creating an acceptance protocol.

Ready for the future

The efficient retrofit solution ensures the productive and fully compliant operation of existing wind turbines for many more years. Thanks to the flexible hardware concept, operators can expand the controller functions whenever they choose: Additional I/O channels are available, for example, for the integration of more sensors to realize sophisticated control algorithms and further optimize the power curve.



Watch the video of the rollout.

bachmann.



www.bachmann.info

© 11/2023 by Bachmann electronic | Subject to modifications

